



ST. GEORGES DRIVE
PIMLICO

JACKSON-STOPS 

ST. GEORGES DRIVE PIMLICO, SW1V

ASKING PRICE: £900 PER WEEK

This stylish two-bedroom, two-bathroom apartment in the heart of Pimlico features a private roof terrace and lift access.

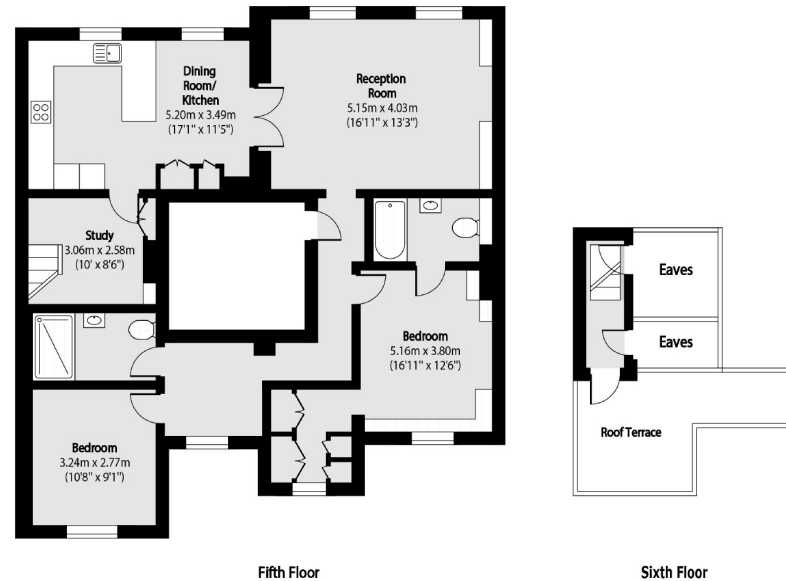
Offering spacious living with modern finishes, it's ideally located just moments from Pimlico station and local amenities. Just 0.3 miles from Pimlico Underground Station, 0.6 miles from Victoria Station, 0.8 Miles from St James' Park Underground Station and 0.9 Miles from Vauxhall Station.



KEY FEATURES

- Kitchen
- Reception Room
- Two Bedrooms
- Two Bathrooms
- Lift
- Tax Band: F





Total area (approx): 100.38 sq m (1080 sq. ft)
 ((Excluding Eaves))
 Roof Terrace total area (approx): 10.16 sq m (109 sq. ft)

Energy Rating: C. We aim to make our particulars both accurate and reliable. However they are not guaranteed; nor do they form part of an offer or contract. If you require clarification on any points then please contact us, especially if you are travelling some distance to view. Please note that appliances and heating systems have not been tested and therefore no warranties can be given as to their good working order.

ASKING PRICE: £900 PER WEEK

PIMLICO

020 7828 4243

pimlicolettings@jackson-stops.com

jackson-stops.co.uk

JACKSON-STOPS

