



ST. GEORGES SQUARE
PIMLICO

JACKSON-STOPS 

ST. GEORGES SQUARE PIMLICO, SW1V

ASKING PRICE: £852 PER WEEK

A modern basement flat in this refurbished Grade II listed building on a garden square in Pimlico.

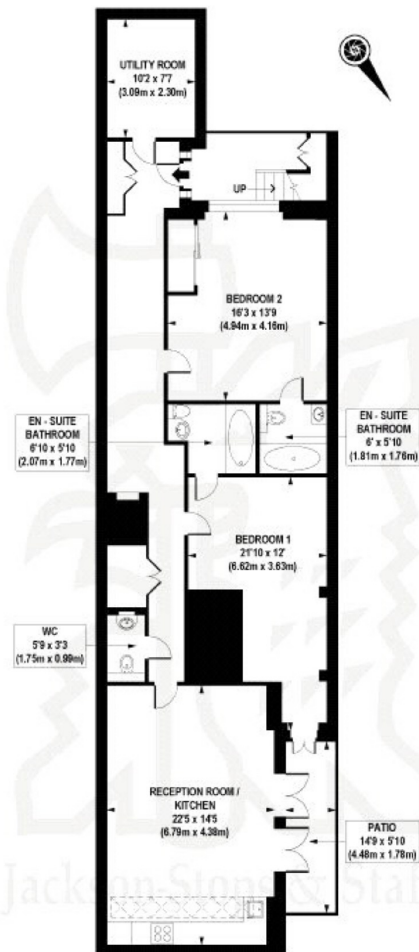
The property benefits from a large open plan kitchen reception room, leading to a private patio deck, two en-suite double bedrooms, guest loo and vault study/storage and a fully integrated Gaganeu kitchen and a smart living AV system. Just 0.1 miles from Pimlico Underground Station, 0.7 miles from Victoria Station and Vauxhall Station.

KEY FEATURES

- Two Bedrooms
- Two Bathrooms
- Kitchen
- Reception
- Patio
- Tax Band: F







LOWER GROUND FLOOR

APPROX. GROSS INTERNAL FLOOR AREA 1259 sq. ft / 117.00 sq. m

COMPLIANT WITH RICS CODE OF MEASURING PRACTICE: Floorplan is for illustrative purposes only and is not to scale. Every attempt has been made to ensure the accuracy of the floorplan shown, however all measurements, fixtures, fittings and data shown are an approximate interpretation for illustrative purposes only. Liability for errors, omissions or mis-statement through negligence or otherwise is hereby excluded.

CP CREATIVE
Property Marketing

Energy Rating: E. We aim to make our particulars both accurate and reliable. However they are not guaranteed; nor do they form part of an offer or contract. If you require clarification on any points then please contact us, especially if you are travelling some distance to view. Please note that appliances and heating systems have not been tested and therefore no warranties can be given as to their good working order.

ASKING PRICE: £852 PER WEEK

PIMLICO

020 7828 4243

pimlicolettings@jackson-stops.com

jackson-stops.co.uk

JACKSON-STOPS

