



ALDERNEY STREET
PIMLICO

JACKSON-STOPS 

ALDERNEY STREET PIMLICO, SW1V

ASKING PRICE: £740,000

A fantastic garden flat located in the heart of the Pimlico grid.

The property measures in excess of 800 sqft and benefits from two double bedrooms, two bathrooms and a well configured reception room which leads onto the kitchen and opens out onto a stunning patio garden.

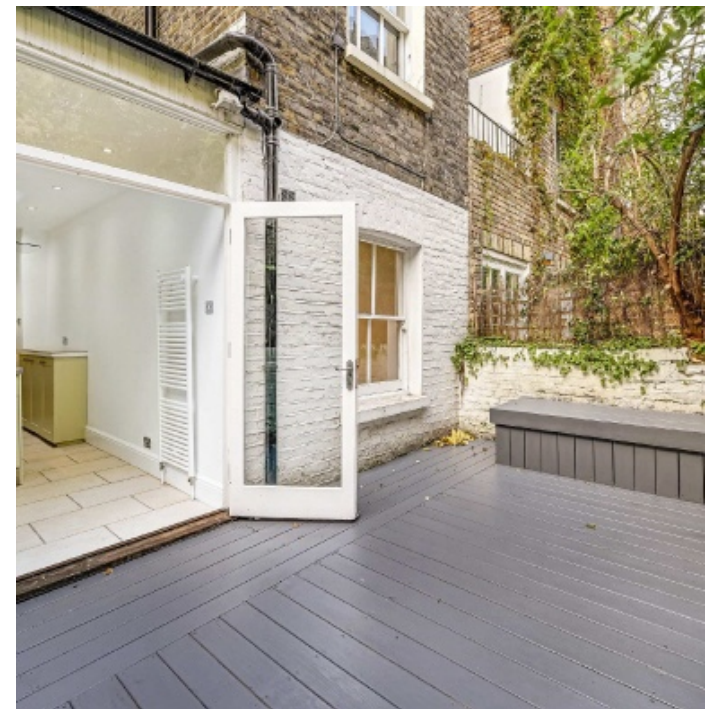
This would be the ideal flat for a first time buyer or those looking for a pied-a-terre as well as someone seeking to downsize and who wants to benefit from the convenience and amenities of central London.

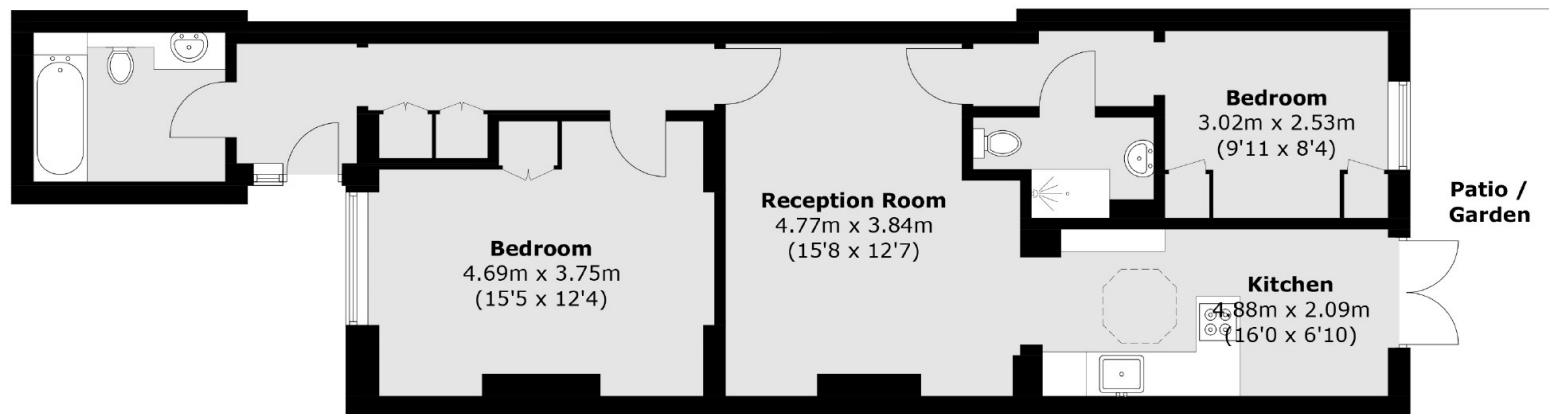
Alderney Street is well located in the middle of the sought after Pimlico grid. It's tranquil location is complimented by its proximity to both local shopping and transport links including Victoria mainline station with bus, underground and overground services, as well as the Gatwick Express being only 0.5 miles away, whilst Battersea Park is only a stones' throw away and its 200 acres of open space.

KEY FEATURES

- Two Double Bedrooms
- Private Patio/Garden
- Leasehold
- Ground Rent: £100 pa
- Service Charge: c. £2000 pa
- Tax Band: E







Lower Ground Floor

Total area (approx.): 75.4 sq. m (811.6 sq. ft)

Energy Rating: C. We aim to make our particulars both accurate and reliable. However they are not guaranteed; nor do they form part of an offer or contract. If you require clarification on any points then please contact us, especially if you are travelling some distance to view. Please note that appliances and heating systems have not been tested and therefore no warranties can be given as to their good working order.

ASKING PRICE: £740,000

PIMLICO

020 7828 4050

pimlicosales@jackson-stops.com

jackson-stops.co.uk

JACKSON-STOPS

