



EARDLEY CRESCENT
EARLS COURT

JACKSON-STOPS 

EARDLEY CRESCENT EARLS COURT, SW5

ASKING PRICE: £625 PER WEEK

A two double bedroom apartment situated on the second floor of this period building.

Featuring high ceilings, wood floors and semi-open plan reception/kitchen. Just 0.2 miles from West Brompton Station and 0.3 miles from Earls Court Underground Station.



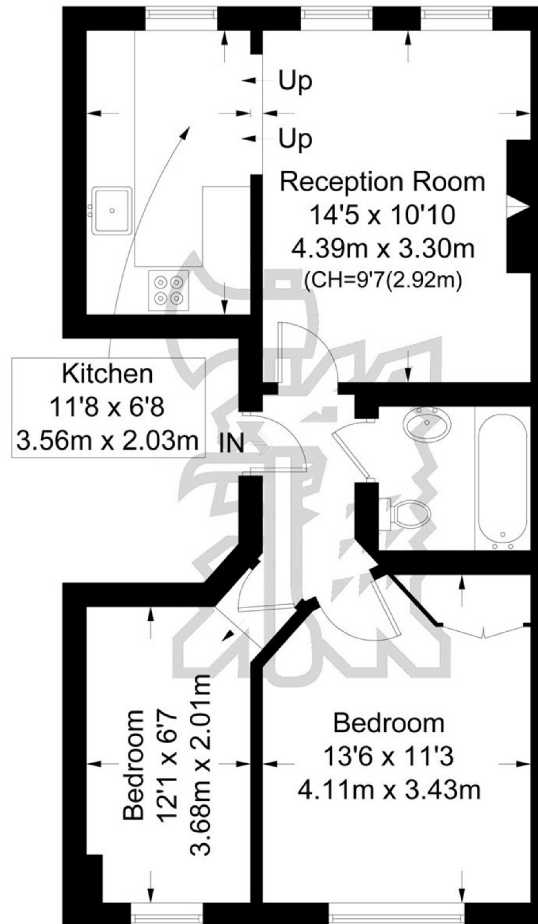
KEY FEATURES

- Two bedrooms
- Bathroom
- Kitchen
- Reception
- Furnished
- Tax Band: E



Eardley Crescent

Approximate Gross Internal Area = 568 sq ft / 52.8 sq m



Second Floor

Not to scale, for guidance only and must not be relied upon as a statement of fact.
All measurements and areas are approximate only and have been prepared in
accordance with the current edition of the RICS Code of Measuring Practice.

Energy Rating: C. We aim to make our particulars both accurate and reliable. However they are not guaranteed; nor do they form part of an offer or contract. If you require clarification on any points then please contact us, especially if you are travelling some distance to view. Please note that appliances and heating systems have not been tested and therefore no warranties can be given as to their good working order.

ASKING PRICE: £625 PER WEEK

PIMLICO

020 7828 4243

pimlicolettings@jackson-stops.com

jackson-stops.co.uk

JACKSON-STOPS