



**GLOUCESTER STREET**  
PIMLICO

**JACKSON-STOPS** 

---

## GLOUCESTER STREET PIMLICO, SW1V

ASKING PRICE: £775 PER WEEK

A two bedroom mews style infill house in the heart of the Pimlico Grid.

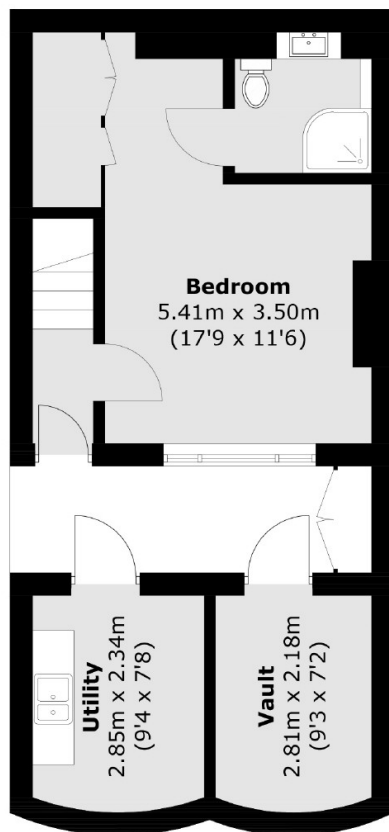
Spilt over three floors, this property offers plenty of entertaining and living space. Just 0.4 miles from Pimlico Underground Station, 0.6 miles from Victoria Station, 0.8 miles from Sloane Square Station and 0.7 miles from Battersea Park.



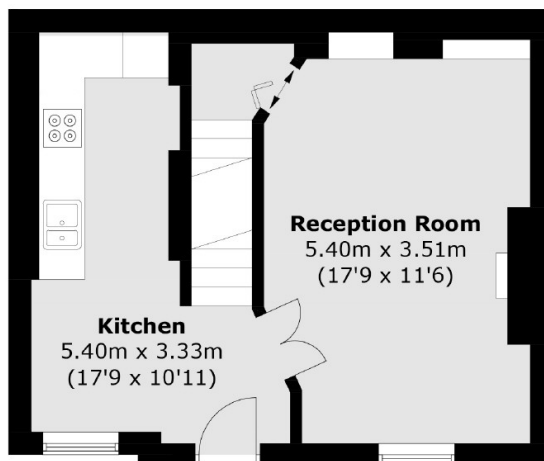
### KEY FEATURES

- Two bedrooms
- Two bathrooms
- Kitchen
- Reception
- Furnished
- Tax Band: G

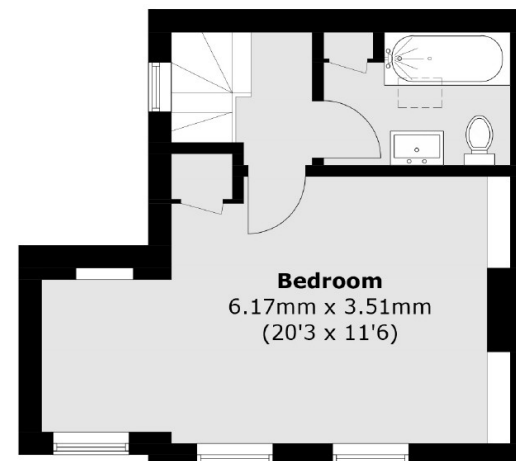




**Lower Ground Floor**



**Ground Floor**



**First Floor**

Total area (approx.): 87.3 sq. m (939.7 sq. ft)  
 Utility & Vault: 12.6 sq. m (135.6 sq. ft)

Energy Rating: D. We aim to make our particulars both accurate and reliable. However they are not guaranteed; nor do they form part of an offer or contract. If you require clarification on any points then please contact us, especially if you are travelling some distance to view. Please note that appliances and heating systems have not been tested and therefore no warranties can be given as to their good working order.

**ASKING PRICE: £775 PER WEEK**

PIMLICO

020 7828 4243

pimlicolettings@jackson-stops.com

jackson-stops.co.uk

**JACKSON-STOPS** 