



ALDERNEY STREET
PIMLICO

JACKSON-STOPS 

ALDERNEY STREET PIMLICO, SW1V

ASKING PRICE: £1,200 PER WEEK

A beautifully refurbished three double bedroom maisonette located in one of Pimlico's most favoured grid streets.

The reception room is on the preferred first floor and enjoys the traditional high ceilings expected of such a property, as well as floor-to-ceiling windows allowing for an abundance of natural light.

Just 0.6 miles from Pimlico Underground Station, 0.5 miles from Victoria Station, 0.6 miles from Sloane Square Underground Station and 0.8 miles from Battersea Park.

KEY FEATURES

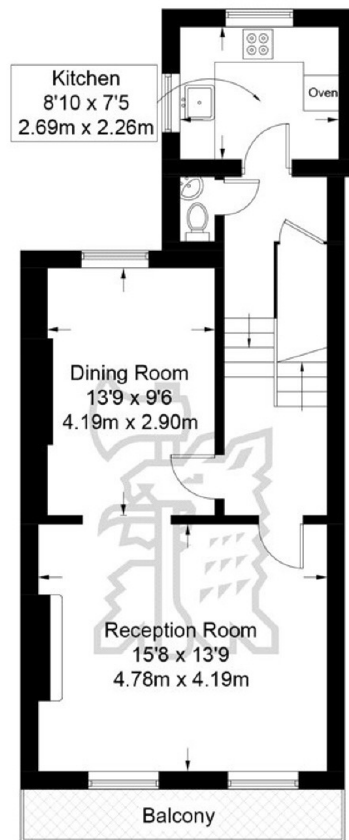
- Three bedrooms
- Two bathrooms
- Kitchen
- Double reception
- Roof terrace
- Tax Band: G



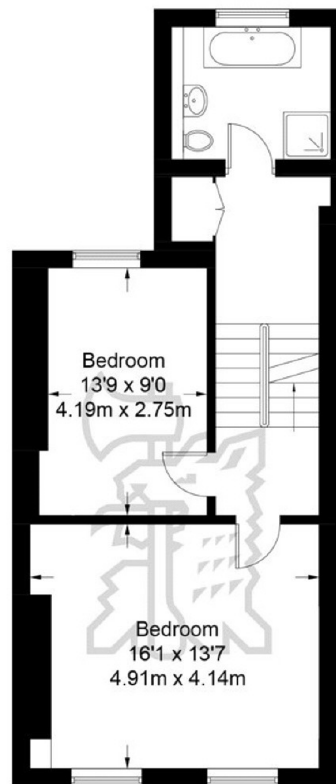


Alderney Street

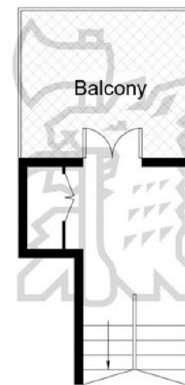
Approximate Gross Internal Area = 1622 sq ft / 150.7 sq m



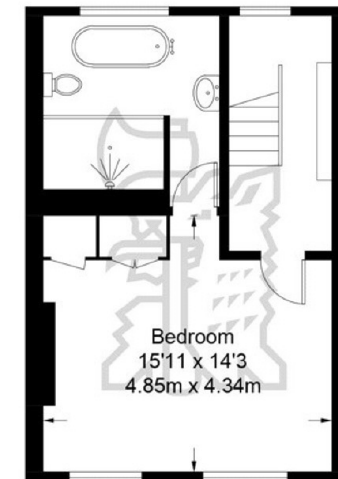
First Floor
566 sq ft / 52.6 sq m



Second Floor
565 sq ft / 52.5 sq m



Half Landing
82 sq ft / 7.6 sq m



Third Floor
409 sq ft / 38 sq m

Not to scale, for guidance only and must not be relied upon as a statement of fact.
All measurements and areas are approximate only and have been prepared in accordance with the current edition of the RICS Code of Measuring Practice.

Energy Rating: D. We aim to make our particulars both accurate and reliable. However they are not guaranteed; nor do they form part of an offer or contract. If you require clarification on any points then please contact us, especially if you are travelling some distance to view. Please note that appliances and heating systems have not been tested and therefore no warranties can be given as to their good working order.

ASKING PRICE: £1,200 PER WEEK

PIMLICO

020 7828 4243

pimlicolettings@jackson-stops.com

jackson-stops.co.uk

JACKSON-STOPS 