



WARWICK SQUARE
PIMLICO

JACKSON-STOPS 

WARWICK SQUARE PIMLICO, SW1V

ASKING PRICE: £1,200 PER WEEK

A two bedroom, first and second floor, flat on Warwick Square. Offering plenty of living and entertaining space as well as wooden floors in the reception and dining room.

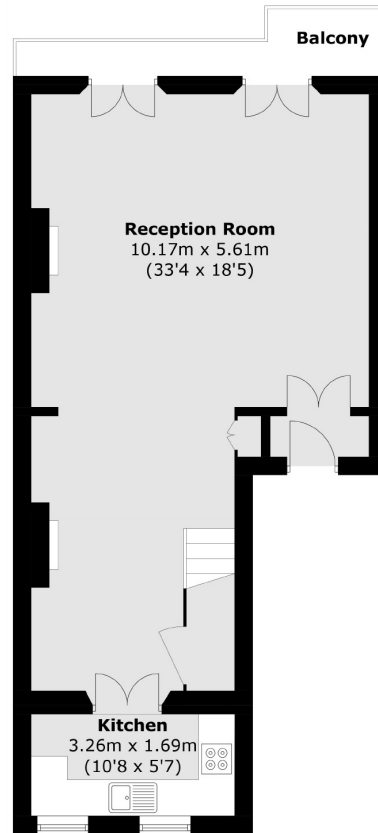
Shown as previously furnished. Just 0.4 miles from Pimlico Underground Station, 0.5 miles from Victoria Station and 0.9 miles from Battersea Park.



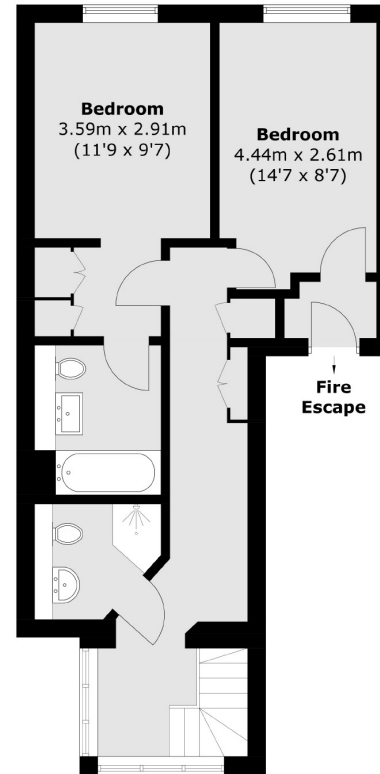
KEY FEATURES

- Two Bedrooms
- Two Bathrooms
- Reception/Dining Room
- Kitchen
- Balcony
- Tax Band: F





First Floor



Second Floor

Total area (approx.): 106.8 sq. m (1,149.6 sq. ft)
Balcony area (approx.): 4.5 sq. m (48.4 sq. ft)

Energy Rating: D. We aim to make our particulars both accurate and reliable. However they are not guaranteed; nor do they form part of an offer or contract. If you require clarification on any points then please contact us, especially if you are travelling some distance to view. Please note that appliances and heating systems have not been tested and therefore no warranties can be given as to their good working order.

ASKING PRICE: £1,200 PER WEEK

PIMLICO

020 7828 4243

pimlicolettings@jackson-stops.com

jackson-stops.co.uk

JACKSON-STOPS

