



WINCHESTER STREET
PIMLICO

JACKSON-STOPS 

WINCHESTER STREET PIMLICO, SW1V

ASKING PRICE: £1,150,000

A beautifully decorated and most unusual 'infill' house with its own street entrance, a pretty and private patio garden as well as off street garaging is offered to the market in Pimlico, SW1.

The property extends to circa 1400 sqft, has two double bedrooms, two bathrooms, a beautifully light first floor drawing room, a conservatory styled dining room as well as a sitting room / study on the ground floor. There is also potential to convert the garage into a third bedroom with en-suite, subject to all the necessary consents.

This would suit those looking for a mid-sized house for an expanding family, downsizers looking for a central London home as well those searching for a grown-up pied-a-terre.

Tenure: Leasehold: 95 years remaining



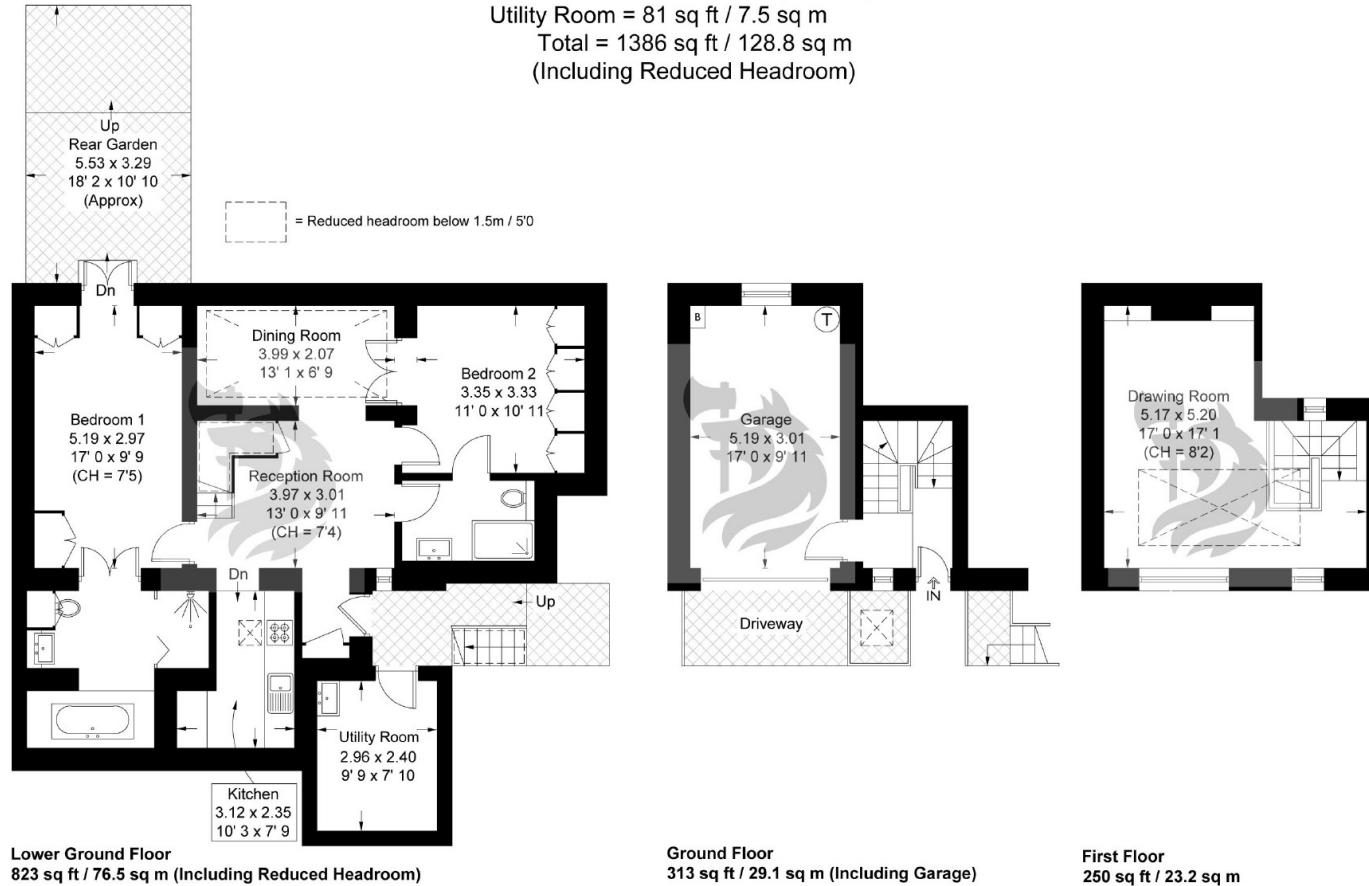
KEY FEATURES

- Patio Garden
- Infill House
- Off Street Garaging
- Two Double Bedrooms
- Drawing Room
- Ground Rent: £200 pa



Winchester Street

Approximate Gross Internal Area = 1284 sq ft / 119.3 sq m
 (Excluding Reduced Headroom / Including Garage)
 Reduced Headroom = 21 sq ft / 2 sq m
 Utility Room = 81 sq ft / 7.5 sq m
 Total = 1386 sq ft / 128.8 sq m
 (Including Reduced Headroom)



Not to scale, for guidance only and must not be relied upon as a statement of fact
 All measurements and areas are approximate only and have been prepared in
 accordance with the current edition of the RICS Code of Measuring Practice

Energy Rating: E. We aim to make our particulars both accurate and reliable. However they are not guaranteed; nor do they form part of an offer or contract. If you require clarification on any points then please contact us, especially if you are travelling some distance to view. Please note that appliances and heating systems have not been tested and therefore no warranties can be given as to their good working order.

ASKING PRICE: £1,150,000

PIMLICO

020 7828 4050

pimlicosales@jackson-stops.com

jackson-stops.co.uk

JACKSON-STOPS 