



SUSSEX STREET
PIMLICO

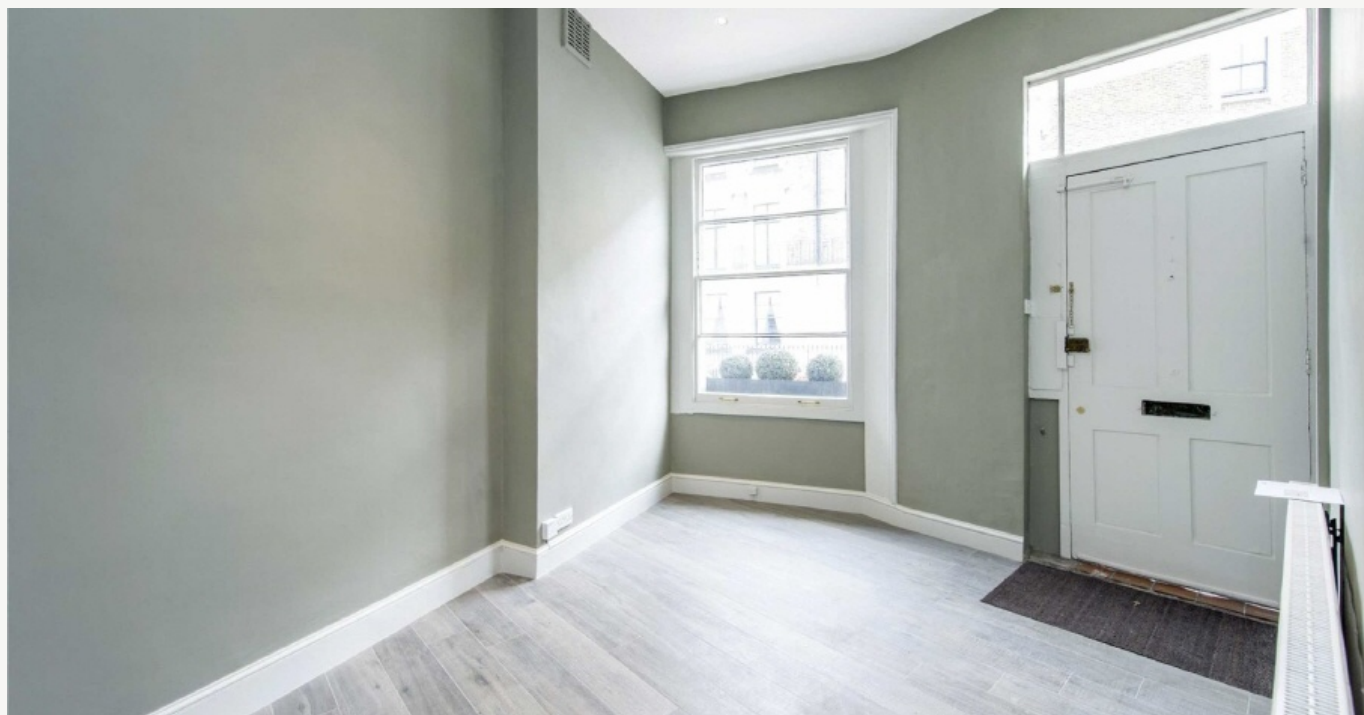
JACKSON-STOPS 

SUSSEX STREET PIMLICO, SW1V

ASKING PRICE: £1,153 PER WEEK

A period, corner terrace house refurbished in recent years. Situated in the heart of the Pimlico Grid, offering plenty of entertaining and living space.

The property boasts four bedrooms, three bathrooms (one ensuite), open-plan Kitchen/Dining Room and larger than average entrance hall. Just 0.5 miles from Pimlico Underground Station, 0.7 miles from Victoria Station, 0.7 miles from Sloane Square Station and 0.5 miles from Battersea Park.



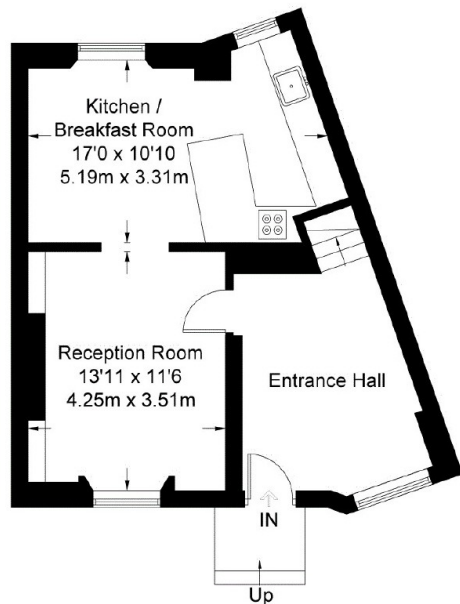
KEY FEATURES

- Four Bedrooms
- Three Bathrooms
- Reception
- Kitchen
- Dining Area
- Tax Band: G

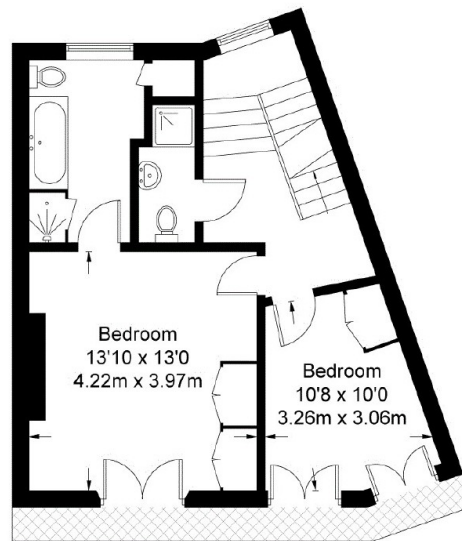


Sussex Street

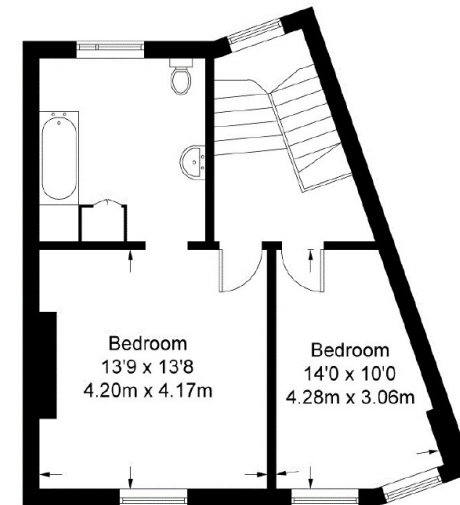
Approximate Internal Floor Area
1531 sq ft / 142.3 sq m
Approximate Additional Area
0 sq ft / 0 sq m
Total Areas Shown On Plan
1531 sq ft / 142.3 sq m



Ground Floor = 507 sq ft / 47.1 sq m



First Floor = 515 sq ft / 47.9 sq m



Second Floor = 509 sq ft / 47.3 sq m

Not to scale, for guidance only and must not be relied upon as a statement of fact.
All measurements and areas are approximate only and have been prepared in accordance with the current edition of the RICS Code of Measuring Practice.

Energy Rating: E. We aim to make our particulars both accurate and reliable. However they are not guaranteed; nor do they form part of an offer or contract. If you require clarification on any points then please contact us, especially if you are travelling some distance to view. Please note that appliances and heating systems have not been tested and therefore no warranties can be given as to their good working order.

16 SUSSEX STREET, WESTMINSTER, LONDON, SW1V 4RW

020 7828 4243

pimlicolettings@jackson-stops.com

jackson-stops.co.uk

JACKSON-STOPS 