



GLOUCESTER STREET
PIMLICO

JACKSON-STOPS 

GLOUCESTER STREET, PIMLICO, SW1V

ASKING PRICE: £595 PER WEEK

A bright and spacious, top floor, two bedroom flat in Pimlico.

The property benefits from lots of natural light and wooden floors in the reception and main bedroom.

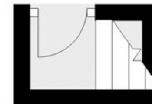
Just 0.4 miles from Pimlico Underground Station, 0.7 miles from Victoria and Sloane Square Stations and 0.6 miles from Battersea Park.

KEY FEATURES

- Two bedrooms
- Bathroom
- Kitchen
- Reception
- Top Floor
- Tax Band: E

Energy Rating: D. We aim to make our particulars both accurate and reliable. However they are not guaranteed; nor do they form part of an offer or contract. If you require clarification on any points then please contact us, especially if you are travelling some distance to view. Please note that appliances and heating systems have not been tested and therefore no warranties can be given as to their good working order.

Second Floor



Third Floor



Total area: approx. 57.9 sq. metres (623.5 sq. feet)

ASKING PRICE: £595 PER WEEK

PIMLICO

020 7828 4243

pimlicolettings@jackson-stops.com

jackson-stops.co.uk

JACKSON-STOPS 