



SLOANE AVENUE
CHELSEA

JACKSON-STOPS 

SLOANE AVENUE CHELSEA, SW3

ASKING PRICE: £685 PER WEEK

A nicely finished, spacious, ground floor double bedroom apartment with a separate bathroom to rent in the popular Nell Gwynn House.

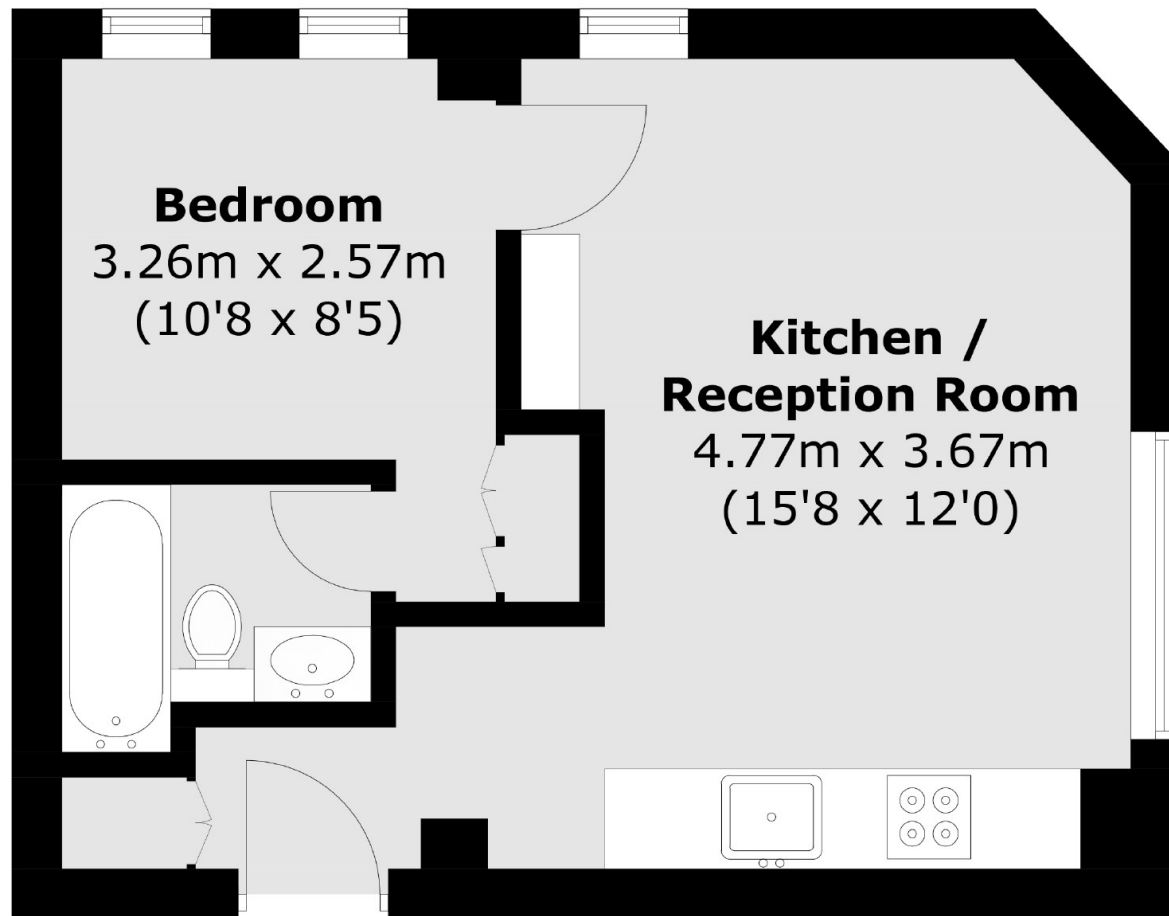
Located in a portered block on the highly sought after Sloane Avenue, the property is only a short walk to all the amenities Chelsea has to offer. Tube and bus links can be found nearby providing access to the whole of London and beyond. Less than 0.4 miles from South Kensington (District, Circle and Piccadilly lines) or Sloane Square (District and Circle lines) Underground Stations.



KEY FEATURES

- Bedroom
- Bathroom
- Kitchen
- Reception
- Heating & Hot Water Inc
- 24 hr Porter





Total area (approx.): 30.9 sq. m (332.6 sq. ft)

Energy Rating: C. We aim to make our particulars both accurate and reliable. However they are not guaranteed; nor do they form part of an offer or contract. If you require clarification on any points then please contact us, especially if you are travelling some distance to view. Please note that appliances and heating systems have not been tested and therefore no warranties can be given as to their good working order.

ASKING PRICE: £685 PER WEEK

PIMLICO

020 7828 4243

pimlicolettings@jackson-stops.com

jackson-stops.co.uk

JACKSON-STOPS 