



MARSHAM STREET
WESTMINSTER

JACKSON-STOPS 

MARSHAM STREET, WESTMINSTER, SW1P

ASKING PRICE: £650 PER WEEK

Bright and modern two bedroom apartment in this smart portered block in Westminster, Benefiting from underground parking, gym and 24-hour porter.

Just 0.6 miles from Pimlico, Westminster or St James Underground Stations.

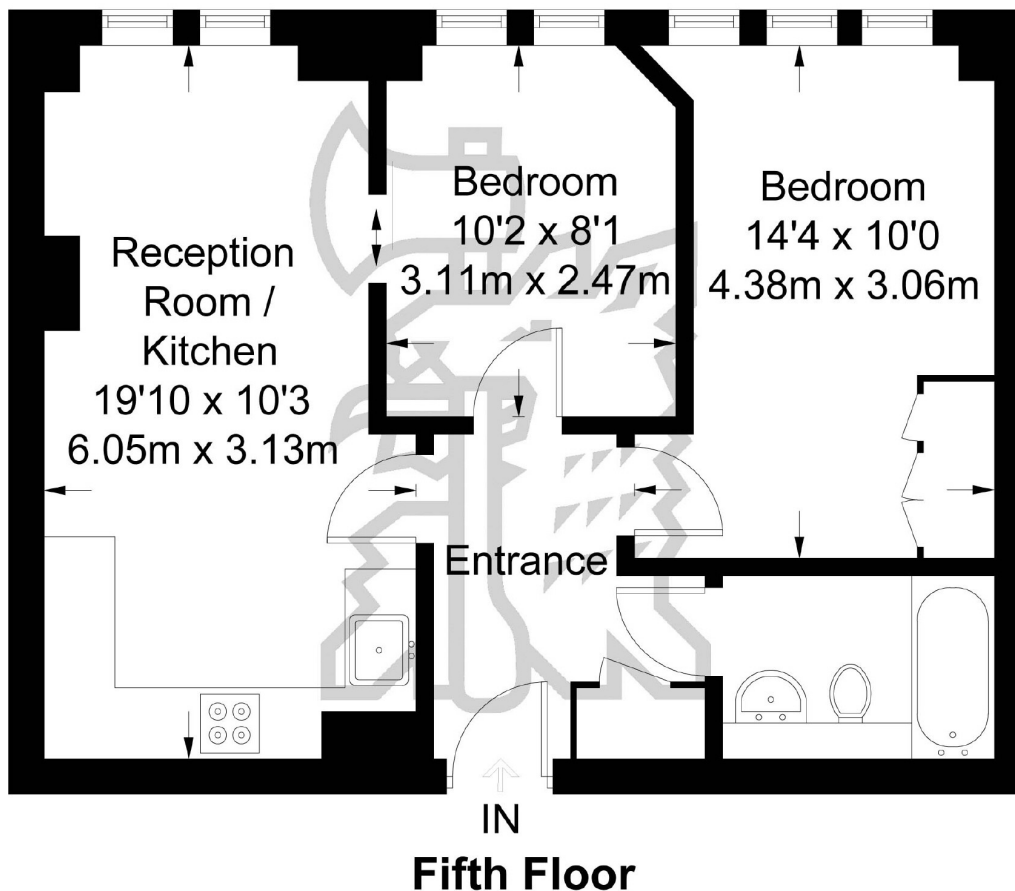
KEY FEATURES

- Two Bedrooms
- Bathroom
- Kitchen
- Reception
- Porter
- Tax Band: F

Energy Rating: C. We aim to make our particulars both accurate and reliable. However they are not guaranteed; nor do they form part of an offer or contract. If you require clarification on any points then please contact us, especially if you are travelling some distance to view. Please note that appliances and heating systems have not been tested and therefore no warranties can be given as to their good working order.

Marsham Street

Approximate Gross Internal Area = 525 sq ft / 48.8 sq m



Not to scale, for guidance only and must not be relied upon as a statement of fact.
All measurements and areas are approximate only and have been prepared in accordance with the current edition of the RICS Code of Measuring Practice.

ASKING PRICE: £650 PER WEEK

PIMLICO

020 7828 4243

pimlicolettings@jackson-stops.com

jackson-stops.co.uk

JACKSON-STOPS