



**SLOANE AVENUE**  
CHELSEA

**JACKSON-STOPS** 



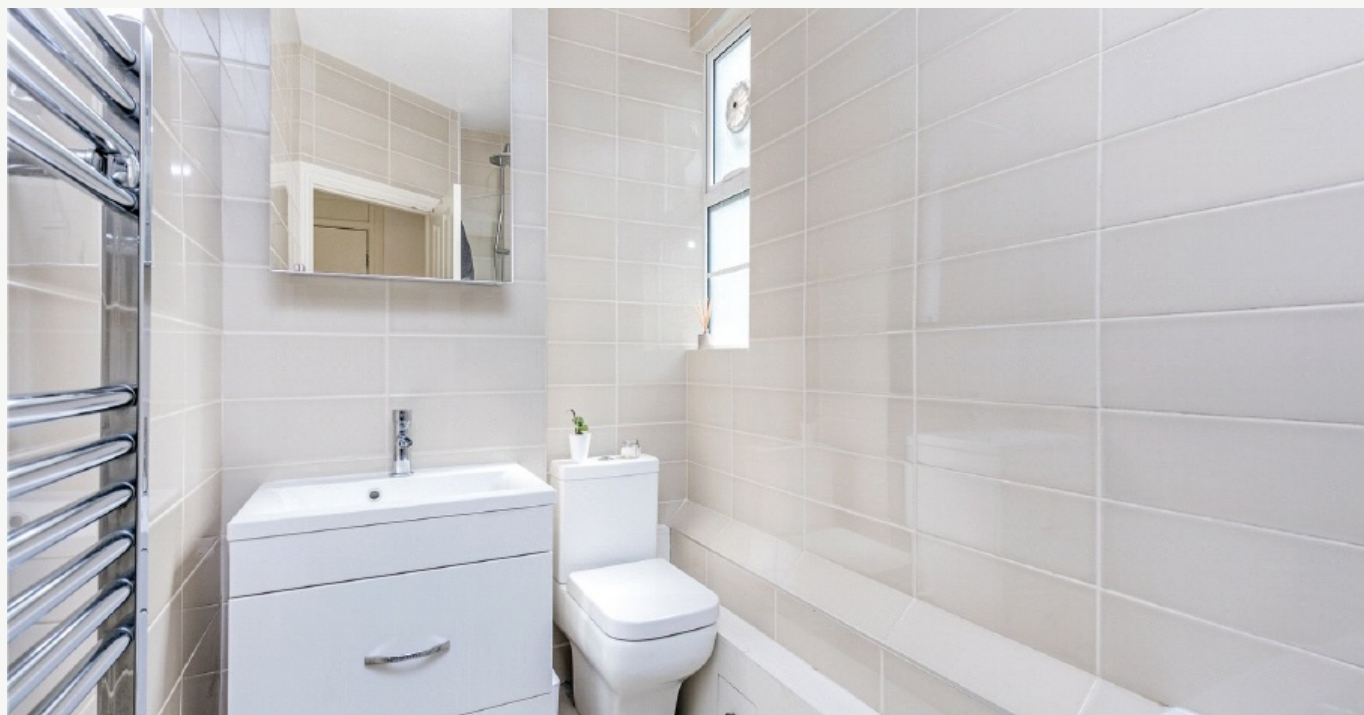
## SLOANE AVENUE CHELSEA, SW3

ASKING PRICE: £475 PER WEEK

A spacious studio flat situated on raised ground floor of this sought after portered block in the heart of Chelsea.

Benefiting from a separate kitchen, plenty of storage space and lots of natural light. Sloane Avenue is a 5 minute walk to all the amenities of Kings Road and Sloane Square. You can reach Sloane Square Tube (Circle and District Lines) in less than 10 minutes and South Kensington station (Circle, District and Piccadilly Lines) in less than 15 minutes.

The UberBoat can be collected from Cadogan Pier giving a scenic route into and out of the City.

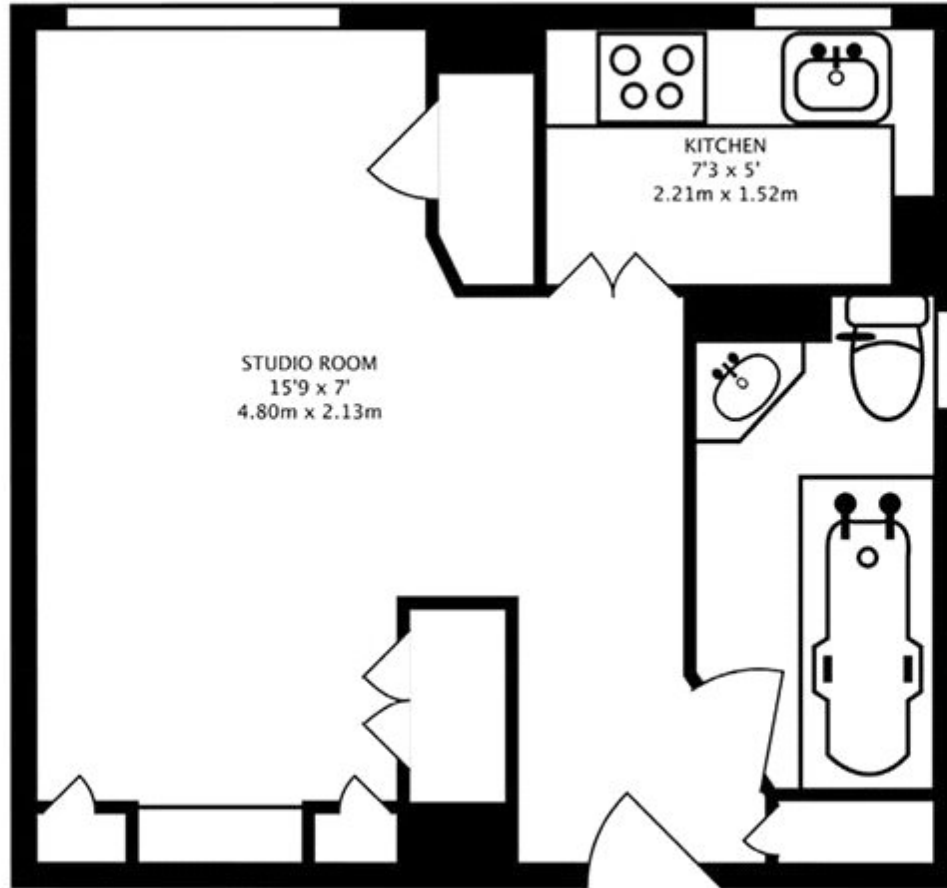


### KEY FEATURES

- Studio Flat
- Reception/Bathroom
- Kitchen
- Furnished
- Porter
- Tax Band: C







Energy Rating: D. We aim to make our particulars both accurate and reliable. However they are not guaranteed; nor do they form part of an offer or contract. If you require clarification on any points then please contact us, especially if you are travelling some distance to view. Please note that appliances and heating systems have not been tested and therefore no warranties can be given as to their good working order.

**ASKING PRICE: £475 PER WEEK**

**PIMLICO**

**020 7828 4243**

[pimlicolettings@jackson-stops.com](mailto:pimlicolettings@jackson-stops.com)

[jackson-stops.co.uk](http://jackson-stops.co.uk)

**JACKSON-STOPS** 