



GLOUCESTER STREET
PIMLICO

JACKSON-STOPS 

GLOUCESTER STREET PIMLICO, SW1V

ASKING PRICE: £995 PER WEEK

A three double bedroom, two bathroom lateral apartment, with benefit of not only a lift but a porter and secure underground parking as well.

Just 0.4 miles from Pimlico Underground Station, 0.6 miles from Victoria Station, 0.9 miles from Sloane Square Underground Station and 0.8 miles from Battersea Park.



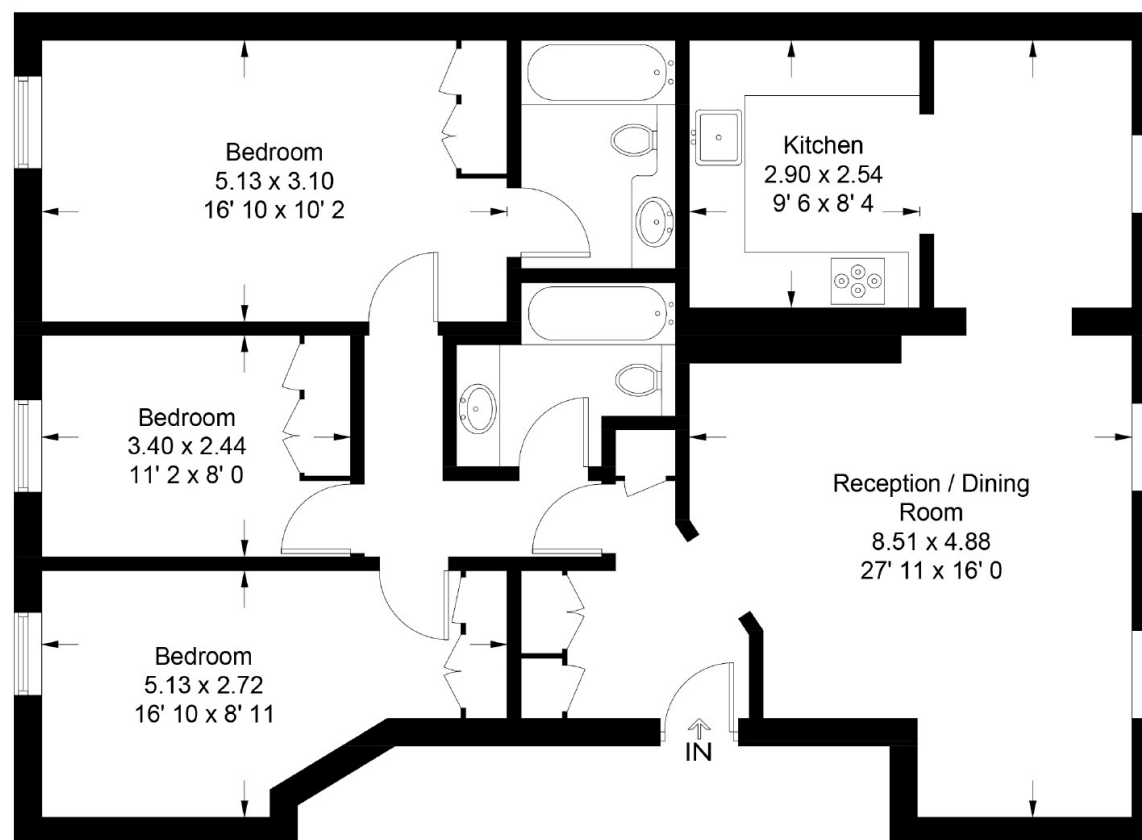
KEY FEATURES

- Three bedrooms
- Two Bathrooms
- Reception
- Kitchen
- Dining area
- Tax Band: G



Raeburn House

Approximate Gross Internal Area = 1030 sq ft / 95.7 sq m



Second Floor

Not to scale, for guidance only and must not be relied upon as a statement of fact
All measurements and areas are approximate only and have been prepared in
accordance with the current edition of the RICS Code of Measuring Practice

Energy Rating: C. We aim to make our particulars both accurate and reliable. However they are not guaranteed; nor do they form part of an offer or contract. If you require clarification on any points then please contact us, especially if you are travelling some distance to view. Please note that appliances and heating systems have not been tested and therefore no warranties can be given as to their good working order.

ASKING PRICE: £995 PER WEEK

PIMLICO

020 7828 4243

pimlicolettings@jackson-stops.com

jackson-stops.co.uk

JACKSON-STOPS 