



MARSHAM STREET  
WESTMINSTER

JACKSON-STOPS 

## MARSHAM STREET WESTMINSTER, SW1P

ASKING PRICE: £2,000,000

A beautifully refurbished and modernised two-bedroom apartment is presented in the iconic Westminster Gardens, an Art Deco landmark with lifts, parking and a 24-hour concierge.

Situated on the fifth floor, this luxury apartment has been meticulously upgraded to fuse classic charm with modern opulence. It boasts a principal bedroom with custom built wardrobes and a marble en-suite bathroom, plus a second suite with a dressing room and Philippe Starck shower. Ideal for hosting, it features a spacious reception area, a state-of-the-art audio-visual system, and a gourmet kitchen with Smallbone cabinetry and Miele appliances.

Additional perks include a 24-hour concierge, residents' parking, and a rooftop terrace offering stunning views.

Located in central Westminster, it's steps away from historic sites and fashionable hubs, with excellent transport links at Victoria, St James' Park, Pimlico, and Westminster underground stations.

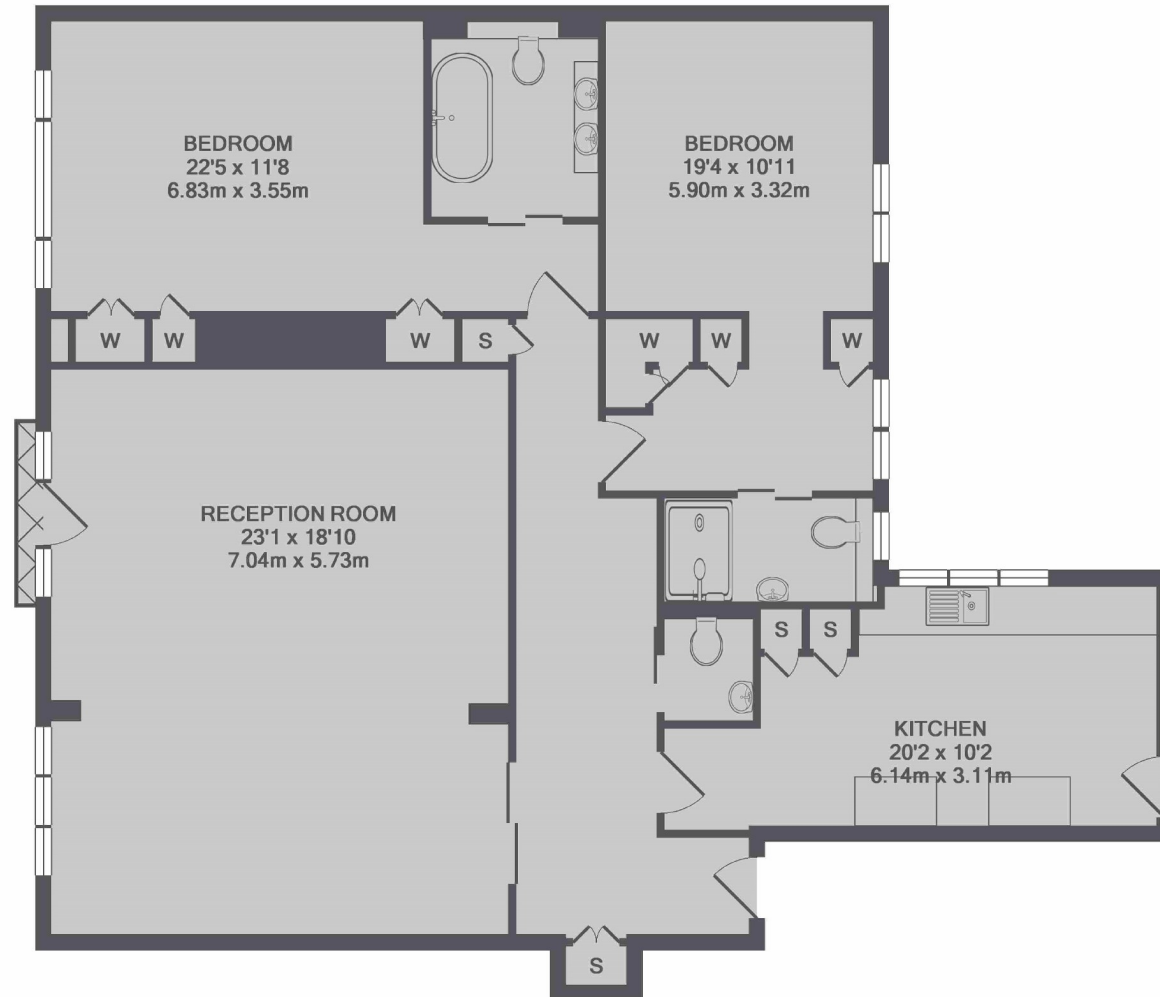
Tenure: Leasehold + Share of Freehold

### KEY FEATURES

- 24 Hour Porters
- Block Parking
- Communal Roof Terrace
- Ground Rent: £25
- Service Charge: c. £14,000+ pa







TOTAL APPROX. FLOOR AREA 1361 SQ.FT. (126.5 SQ.M.)

Energy Rating: C. We aim to make our particulars both accurate and reliable. However they are not guaranteed; nor do they form part of an offer or contract. If you require clarification on any points then please contact us, especially if you are travelling some distance to view. Please note that appliances and heating systems have not been tested and therefore no warranties can be given as to their good working order.

ASKING PRICE: £2,000,000

PIMLICO

020 7828 4050

pimlicosales@jackson-stops.com

jackson-stops.co.uk

JACKSON-STOPS 