



SUTHERLAND STREET  
PIMLICO

JACKSON-STOPS 

---

## SUTHERLAND STREET PIMLICO, SW1V

ASKING PRICE: £595,000

A one bedroom first floor apartment is presented to the market in Pimlico SW1.

On the market for the first time in 28 years, this one bedroom flat could benefit from some modernisation and potential reconfiguring. There is a lovely portico balcony to the front, accessed by French windows as well as a rear terrace that, subject to planning, could be incorporated into the main body of the flat to increase the footplate.

An opportunity to acquire an unmodernised first floor property with potential is rare. This would suit all those looking for a central London home, be that as a first time buyer, a pied-a-terre buyer, downsizes looking for a small project or rental investors with an eye to the future.

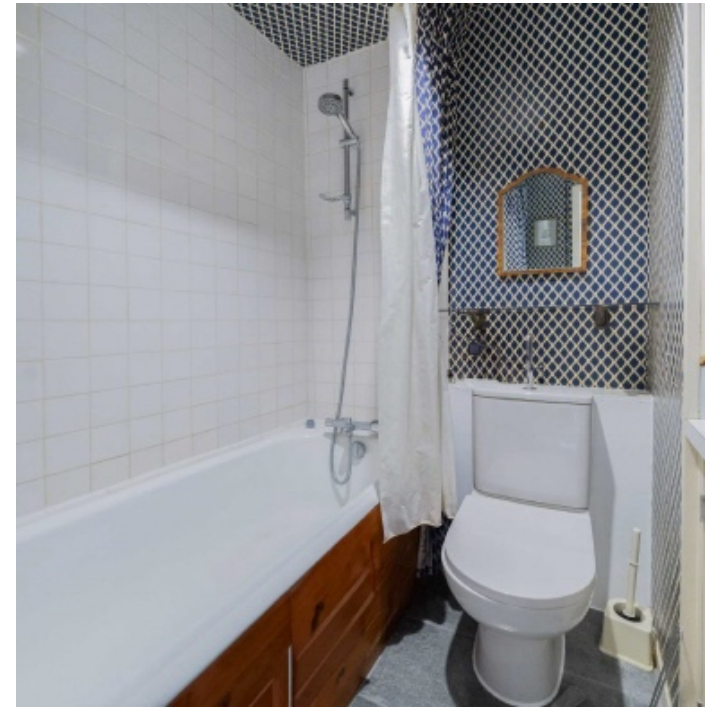
Sutherland street is well positioned for local shopping and transport links. Sloane Square is 0.8 miles, Victoria Station / Gatwick Express 0.6 miles, Pimlico Underground 0.5 miles and the 360, C10 and 24 buses are a 2 min walk away.

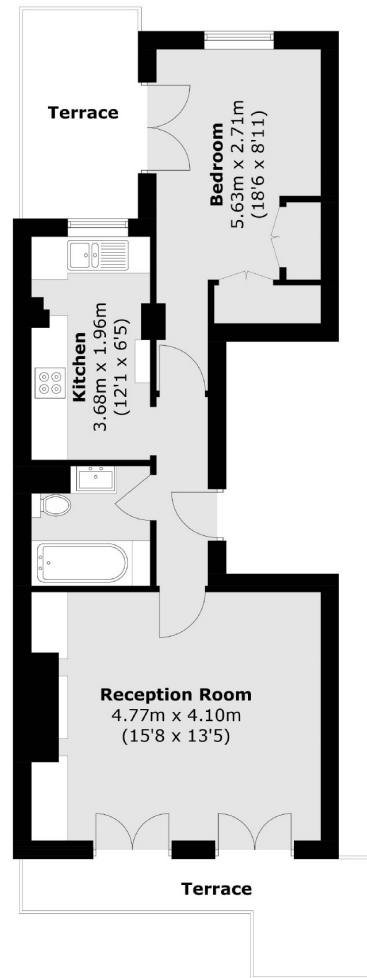
Tenure: Leasehold + Share of Freehold

### KEY FEATURES

- Share of Freehold
- Residents Parking
- One Bedroom
- Unmodernised
- Service Charge: £1080 pa
- Tax Band: F







**First Floor**

Total area (approx.): 48.4 sq. m (521.0 sq. ft)  
Terrace areas (approx.): 13.8 sq. m (148.5 sq. ft)

Energy Rating: C. We aim to make our particulars both accurate and reliable. However they are not guaranteed; nor do they form part of an offer or contract. If you require clarification on any points then please contact us, especially if you are travelling some distance to view. Please note that appliances and heating systems have not been tested and therefore no warranties can be given as to their good working order.

ASKING PRICE: £595,000

PIMLICO

020 7828 4050

pimlicosales@jackson-stops.com

jackson-stops.co.uk

**JACKSON-STOPS** 