



WESTMORELAND TERRACE
PIMLICO

JACKSON-STOPS 

WESTMORELAND TERRACE PIMLICO, SW1V

ASKING PRICE: £2,300,000

A superbly balanced four bedroom freehold family home is offered to the market in Pimlico SW1.

The property benefits from plenty of entertaining space throughout. The fully equipped kitchen is on the lower ground, adjacent the dining area that leads out to the rear patio garden. The spacious double reception room occupies the ground floor and benefits from not only high ceilings but plenty of natural light as well.

With four bedrooms, the principal occupying the first floor, this would suit all those looking for a family home in prime central London or indeed a substantial pied-a-terre that can also accommodate friends and family.

There is also subject to planning and all necessary consents potential to build and design a roof top garden by redirecting a historic planning consent. Westmoreland Terrace makes up part of the Westmoreland Triangle, a well run and active residents association. It is well located for all local transport being only 0.7 Miles from Sloane Square, 0.6 Miles from Victoria Mainland station and only 0.4 Miles from Battersea Park.

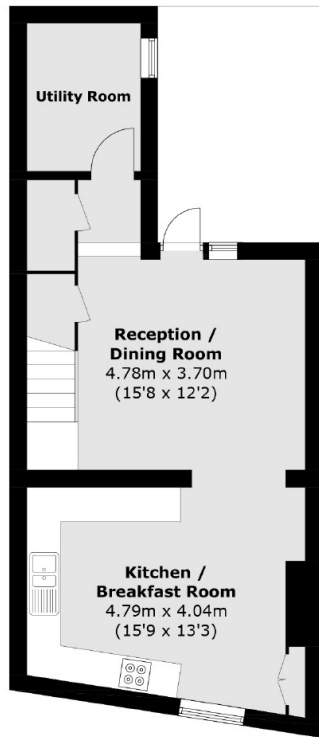
Tenure: Freehold

KEY FEATURES

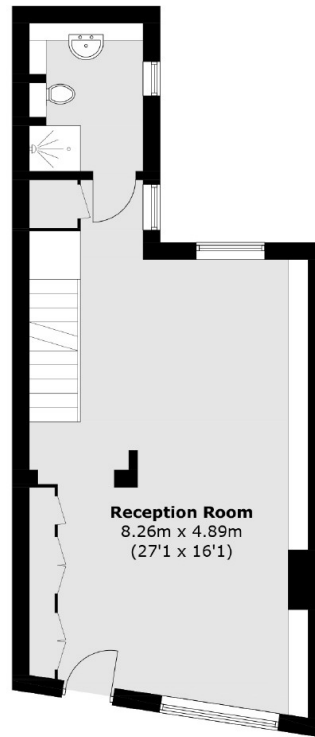
- Freehold
- Four Bedrooms
- Patio Garden
- High Ceilings
- Pimlico
- Tax Band: H



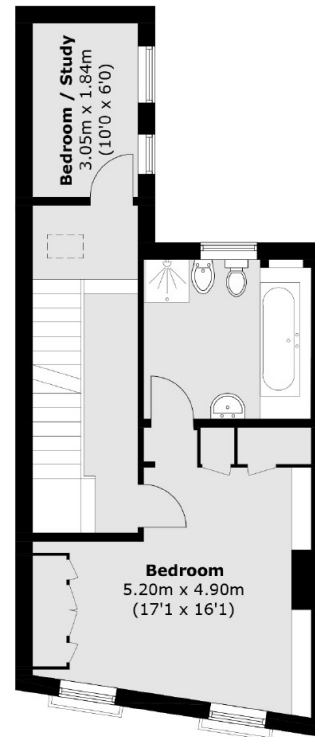




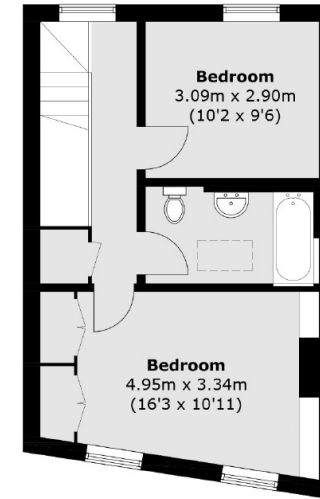
Lower Ground Floor



Raised Ground Floor



First Floor



Second Floor

Total area (approx.): 174.9 sq. m (1,882.5 sq. ft)

Energy Rating: D. We aim to make our particulars both accurate and reliable. However they are not guaranteed; nor do they form part of an offer or contract. If you require clarification on any points then please contact us, especially if you are travelling some distance to view. Please note that appliances and heating systems have not been tested and therefore no warranties can be given as to their good working order.

ASKING PRICE: £2,300,000

PIMLICO

020 7828 4050

pimlicosales@jackson-stops.com

jackson-stops.co.uk

JACKSON-STOPS

