



**ST. GEORGE'S SQUARE MEWS**  
PIMLICO

**JACKSON-STOPS** 

---

## ST. GEORGE'S SQUARE MEWS PIMLICO, SW1V

ASKING PRICE: £895 PER WEEK

A three bedroom Mews House split over three floors.

The property benefits from wooden floors throughout and a private parking space outside the property.

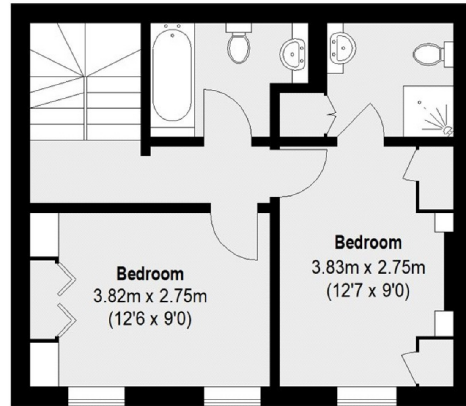
Just 0.3 miles from Pimlico Underground Station and 0.5 miles from Vauxhall Station, 0.9 miles Victoria Station and 1 mile from Battersea Park.



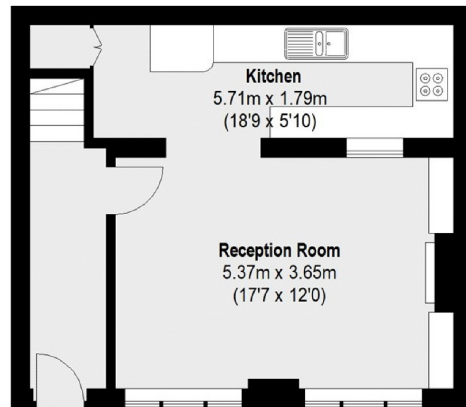
### KEY FEATURES

- Three Bedrooms
- Three Bathrooms
- Reception
- Mews House
- Parking
- Tax Band: E

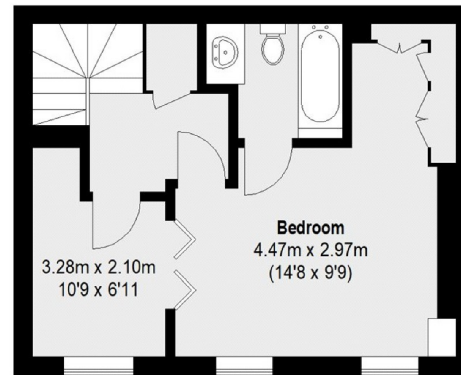




First Floor



Ground Floor



Second Floor

Total area (approx.): 112.4 sq. m (1207 sq. ft)

Energy Rating: D. We aim to make our particulars both accurate and reliable. However they are not guaranteed; nor do they form part of an offer or contract. If you require clarification on any points then please contact us, especially if you are travelling some distance to view. Please note that appliances and heating systems have not been tested and therefore no warranties can be given as to their good working order.

ASKING PRICE: £895 PER WEEK

PIMLICO

020 7828 4243

pimlicolettings@jackson-stops.com

jackson-stops.co.uk

JACKSON-STOPS 