



BELGRAVE ROAD  
PIMLICO

JACKSON-STOPS 

## BELGRAVE ROAD, PIMLICO, SW1V

ASKING PRICE: £550,000

A superb one bedroom ground floor apartment is presented to the market in Pimlico, SW1.

Quietly located to the rear of the building and measuring in the region 615 sqft, this property is well proportioned throughout and would suit all those looking for either a centrally located first time, pied-à-terre or buy to let investment.

Belgrave Road is superbly located for shops, cafes and restaurants of Pimlico and nearby Chelsea as well as excellent transport links of Victoria (Victoria, Circle and District Underground lines, Mainline station and Gatwick Express). The communally accessible St Georges Square is only 0.2 miles and Battersea Park with its 200 acres is approximately one mile.

### KEY FEATURES

Tenure: Leasehold

- One Bedroom
- Ground Floor
- Ground Rent: £300 pa
- Service Charge: £2250 pa
- Grade II Listed
- Tax Band: E

Energy Rating: C. We aim to make our particulars both accurate and reliable. However they are not guaranteed; nor do they form part of an offer or contract. If you require clarification on any points then please contact us, especially if you are travelling some distance to view. Please note that appliances and heating systems have not been tested and therefore no warranties can be given as to their good working order.

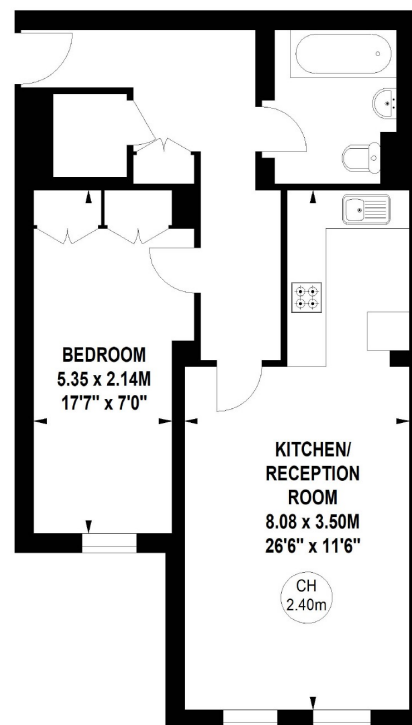
## Belgrave Road, SW1V

Approximate gross internal area

57.23 sq m / 616 sq ft



Key :  
CH - Ceiling Height



Ground Floor

Illustration For Identification Purposes Only.  
All measurements and areas are approximate, not to scale.

16 SUSSEX STREET, WESTMINSTER, LONDON, SW1V 4RW

020 7828 4050

pimlicosales@jackson-stops.com

jackson-stops.co.uk

JACKSON-STOPS 