



ST. GEORGES SQUARE
PIMLICO

JACKSON-STOPS 

ST. GEORGES SQUARE PIMLICO, SW1V

ASKING PRICE: £575 PER WEEK

A top floor, two bedroom flat, on this garden square close to the River Thames. Offering plenty of natural light, living and entertaining space.

Just 0.2 miles from Pimlico Underground Station, 0.6 miles from Vauxhall Station, 0.9 miles from Victoria Station and 0.9 miles from Battersea Park.

KEY FEATURES

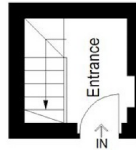
- Two Bedrooms
- Bathroom
- Kitchen
- Reception
- Top Floor
- Tax Band: F



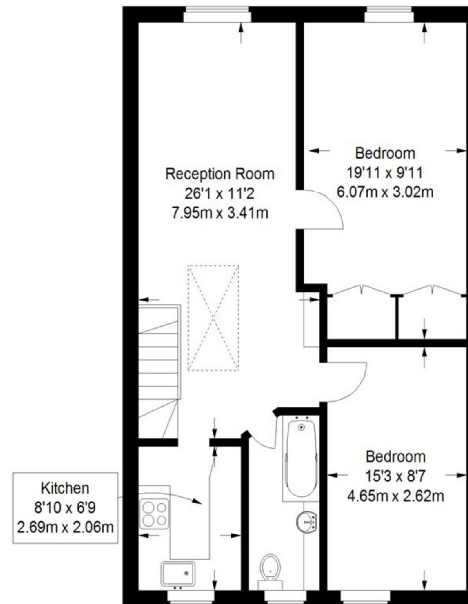


St. George's Square

Approximate Gross Internal Area
775 sq ft / 72 sq m



Third Floor = 45 sq ft / 4.2 sq m



Fourth Floor = 730 sq ft / 67.8 sq m

Not to scale, for guidance only and must not be relied upon as a statement of fact.
All measurements and areas are approximate only and have been prepared in
accordance with the current edition of the RICS Code of Measuring Practice.

Energy Rating: C. We aim to make our particulars both accurate and reliable. However they are not guaranteed; nor do they form part of an offer or contract. If you require clarification on any points then please contact us, especially if you are travelling some distance to view. Please note that appliances and heating systems have not been tested and therefore no warranties can be given as to their good working order.

ASKING PRICE: £575 PER WEEK

PIMLICO

020 7828 4243

pimlicolettings@jackson-stops.com

jackson-stops.co.uk

JACKSON-STOPS 