



ST. GEORGES DRIVE
PIMLICO

JACKSON-STOPS 

ST. GEORGES DRIVE PIMLICO, SW1V

ASKING PRICE: £1,200,000

A well-proportioned (c. 1238.9 sqft) three bedroom duplex apartment, with a private roof terrace, is presented to the market in Pimlico, SW1.

Located on the upper two floors of this stucco fronted period building the apartment is both quiet and naturally light. Offering excellent entertaining space with the reception room measuring circa 17'8" x 18'3" as well as a large eat-in kitchen, both on the third floor.

There is also the opportunity subject to all necessary consents to make one large open plan living space or indeed perhaps reconfigure to add a fourth bedroom with en-suite shower.

St George's Drive is located in the heart of Pimlico, only c. 0.5 miles from Victoria station offering not only over and underground services but also the Gatwick Express making both local, national and international travel within easy reach.

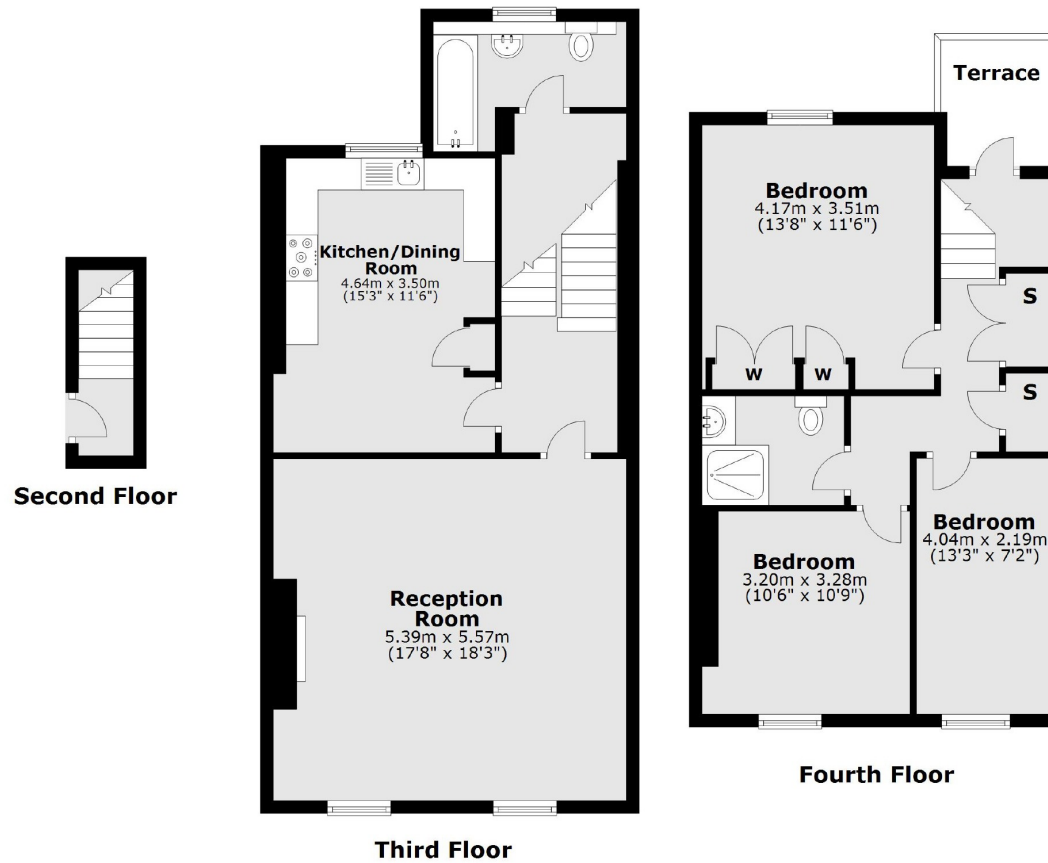
Tenure: Leasehold + Share of Freehold

KEY FEATURES

- Three Bedrooms
- Duplex Apartment
- Service Charge: £1500 pa
- Private Roof Terrace
- Share of Freehold
- Tax Band: G







Total area: approx. 115.1 sq. metres (1238.9 sq. feet)

Energy Rating: E. We aim to make our particulars both accurate and reliable. However they are not guaranteed; nor do they form part of an offer or contract. If you require clarification on any points then please contact us, especially if you are travelling some distance to view. Please note that appliances and heating systems have not been tested and therefore no warranties can be given as to their good working order.

ASKING PRICE: £1,200,000

PIMLICO

020 7828 4050

pimlicosales@jackson-stops.com

jackson-stops.co.uk

JACKSON-STOPS

