



ST. GEORGES SQUARE
PIMLICO

JACKSON-STOPS 

ST. GEORGES SQUARE PIMLICO, SW1V

ASKING PRICE: £1,250,000

A fully refurbished three double bedroom, three bathroom apartment is offered to the market in St. George's Square, Pimlico, SW1.

The property has been cleverly designed throughout, there is plenty of bespoke built-in storage, a convenient private patio garden accessed from a light and bright eat in kitchen that leads off the reception room. Measuring in the region of 1475 sqft this well proportioned, high ceiling apartment would suit all those looking for a central London home or large pied-a-terre.

St George's Square is one of the areas more sought after addresses, located only 0.3 miles from Pimlico underground, 0.9 miles from Victoria mainline station and Battersea Park.

Tenure: Leasehold + Share of Freehold

Local Authority: City of Westminster

KEY FEATURES

- Grade II Listed
- Tax Band: F
- Communal Garden Access
- Three Bedrooms
- Share of Freehold
- Private Patio

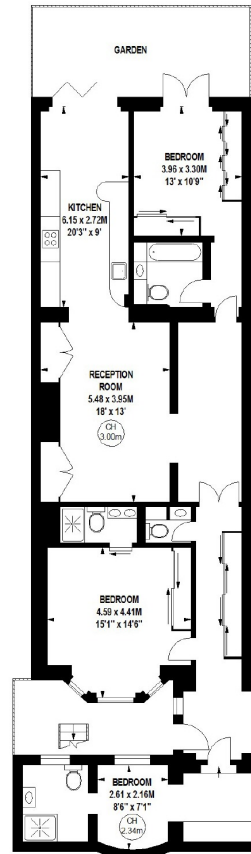




St. Georges Square, SW1V

Approximate gross internal area
137.03 sq m / 1475 sq ft

Key:
CH - Ceiling Height



Lower Ground Floor

The floor plan is not to scale and measurements and areas shown are approximate and therefore should be used for illustrative purposes only. The plan has been prepared in accordance with the RICS code of Measuring Practice and whilst we have confidence in the information produced, it must not be relied on. If there is any aspect of particular importance, you should carry out or commission your own inspection of the property.
Copyright of FeaturePRO.

Energy Rating: C. We aim to make our particulars both accurate and reliable. However they are not guaranteed; nor do they form part of an offer or contract. If you require clarification on any points then please contact us, especially if you are travelling some distance to view. Please note that appliances and heating systems have not been tested and therefore no warranties can be given as to their good working order.

ASKING PRICE: £1,250,000

PIMLICO

020 7828 4050

pimlicosales@jackson-stops.com

jackson-stops.co.uk

JACKSON-STOPS