



Cricketers Walk, SE26 | £350,000

02087029777

[sydenham@pedderproperty.com](mailto:sydenham@pedderproperty.com)

**pedder**  
We live local







## In General

- Superb modern apartment
- Ground floor with lovely green views
- Moments from Crystal Palace Park
- Two double bedrooms
- Good sized reception
- Storage
- Allocated off street parking
- Communal gardens

## In Detail

A light, bright and well proportioned two bedroom ground floor modern apartment, positioned moments from Crystal Palace Park, excellent transport links and a wealth of amenities.

This property enjoys a large reception with attractive green views, a sizeable kitchen with plenty of storage, bathroom and two double bedrooms. Additional storage can also be found in the hallway.

Further benefits include beautifully maintained communal gardens and an allocated off street parking space.

Lawrie Park Road is an ideal location for both Sydenham high street and Crystal Palace triangle, both with a good offering of restaurants, bars and shopping facilities. Also within close proximity of Penge East and Penge West Rail and good bus routes.

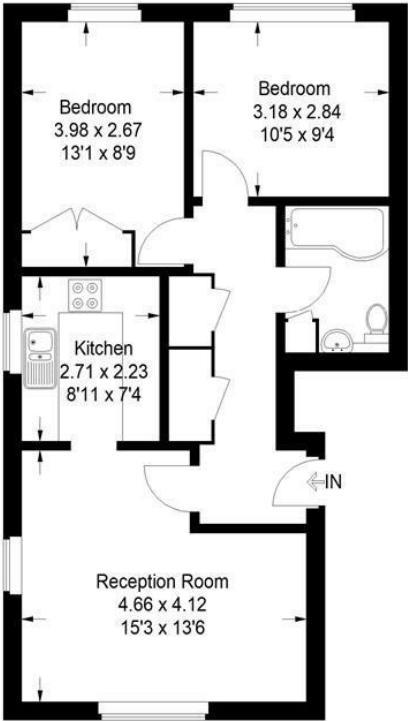
EPC: C | Council Tax Band: C | Lease: 998 Years remaining | SC: £1,536.00 pa | GR: £0 | BI: Incl in SC



# Floorplan

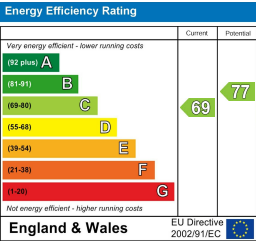
## Cricketers Wall SE26

Approximate Gross Internal Area  
58.3 sq m / 628 sq ft



### Ground Floor

Copyright www.pedderproperty.com © 2023  
These plans are for representation purposes only as defined by RICS - Code of Measuring Practice. Not drawn to Scale. Windows and door openings are approximate. Please check all dimensions, shapes and compass bearings before making any decisions reliant upon them.



Pedder Property Ltd trading as Pedder for themselves and for the vendor/landlord of this property whose agents they are, give notice that (1) these particulars do not constitute any part of an offer or contract, (2) all statements contained within these particulars are made without responsibility on the part of Pedder or the vendor/landlord, (3) whilst made in good faith, none of the statements contained within these particulars are to be relied upon as a statement of representation or fact, (4) any intending purchaser/tenant must satisfy him/herself by inspection or otherwise as to the correctness of each of the statements contained within these particulars, (5) the vendor/landlord does not make or give either Pedder or any person in their employment any authority to make or give representation or warranty whatsoever in relation to this property.