



Lawrie Park Road, SE26 | £265,000

02087029777

[sydenham@pedderproperty.com](mailto:sydenham@pedderproperty.com)

**pedder**  
We live local





## In General

- Stunning one bedroom apartment
- Recently renovated kitchen
- Modern bathroom
- Off-street parking
- Ample storage
- Integrated appliances
- Communal garden
- Moments from Crystal Palace Park
- Excellent transport links

## In Detail

A recently renovated one bedroom apartment offering a light, bright and spacious accommodation, a communal garden and off-street parking, all within a highly desirable location in Sydenham.

Wakefield Court represents a relatively tranquil residential community, situated within the Lawrie Park triangle, surrounded by abundant greenery and in close proximity to Crystal Palace Park. These thoughtfully designed homes exemplify contemporary architectural style. The living spaces are distributed across the raised ground floor, strategically positioned to provide an unobstructed view of the communal gardens.

The property features a modest living room with sufficient space for a dining table, a beautifully renovated kitchen equipped with extensive storage options, along with one double bedroom and a simple yet elegant bathroom.

The local area presents a wealth of amenities, including a variety of coffee shops, convenient transport links including as Penge East rail station (London Victoria), Penge West (Overground), and Sydenham. There are an abundant of shopping facilities and the nearby Crystal Palace Park, which features a range of musical events and is home to the Brown and Green cafe.

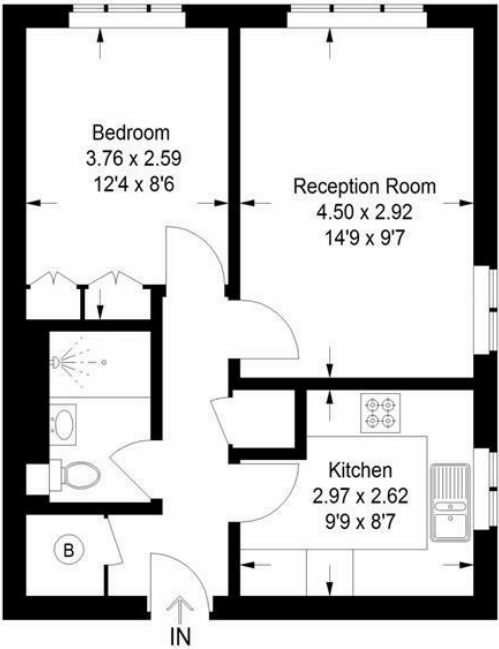
EPC: D | Council Tax Band: C | Lease: 97 Years Remaining | SC: £4,990.05 | GR: £50 | BI: £450



# Floorplan

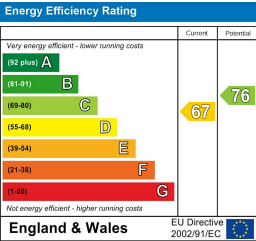
## Wakefield Court, SE26

Approximate Gross Internal Area  
42.1 sq m / 453 sq ft



### Ground Floor

Copyright [www.pedderproperty.com](http://www.pedderproperty.com) © 2024  
These plans are for representation purposes only as defined by RICS - Code of Measuring Practice. Not drawn to Scale. Windows and door openings are approximate. Please check all dimensions, shapes and compass bearings before making any decisions reliant upon them.



Pedder Property Ltd trading as Pedder for themselves and for the vendor/landlord of this property whose agents they are, give notice that (1) these particulars do not constitute any part of an offer or contract, (2) all statements contained within these particulars are made without responsibility on the part of Pedder or the vendor/landlord, (3) whilst made in good faith, none of the statements contained within these particulars are to be relied upon as a statement of representation or fact, (4) any intending purchaser/tenant must satisfy him/herself by inspection or otherwise as to the correctness of each of the statements contained within these particulars, (5) the vendor/landlord does not make or give either Pedder or any person in their employment any authority to make or give representation or warranty whatsoever in relation to this property.