



Queensthorpe Road, SE26  
Guide £625,000 - £650,000

0208 702 9777  
[pedderproperty.com](http://pedderproperty.com)

**pedder**





# In general

- Conservation Area
- Edwardian red brick semi detached house
- Superb kitchen / dining / entertaining space
- Bosch appliances
- Luxurious bathroom and shower room
- Cleverly concealed storage
- No onward chain
- Excellent transport links

# In detail

**\*\* Guide Price £625,000 - £650,000 \*\*** A stunning semi detached Edwardian home, located within the Thorpe Estate in Sydenham, moments from a selection of restaurants, coffee shops and excellent transport links.

Formerly the Rent Office for the Estate, the owners have extensively re-modelled and renovated the property to create an inspiring, balanced home ensuring the house is not only beautifully presented, but also highly functioning.

Comprising a superb living and entertaining space with French doors opening onto a private walled courtyard, a kitchen benefiting from a range of bespoke cabinetry providing maximum storage, brushed gold fittings and high-quality Bosch fitted appliances including a double oven.

Upstairs are two double bedrooms with wonderful high ceilings and a luxurious bathroom. There is also an additional shower room on the ground floor.

Located on this highly sought after road, the location ensures easy access to a wealth of amenities found on the high street, excellent transport links including Sydenham and of course, the wonderful green open spaces of Mayow Park, where you will also find a Brown & Green café.

EPC: TBC | Council Tax Band: TBC





# Floorplan

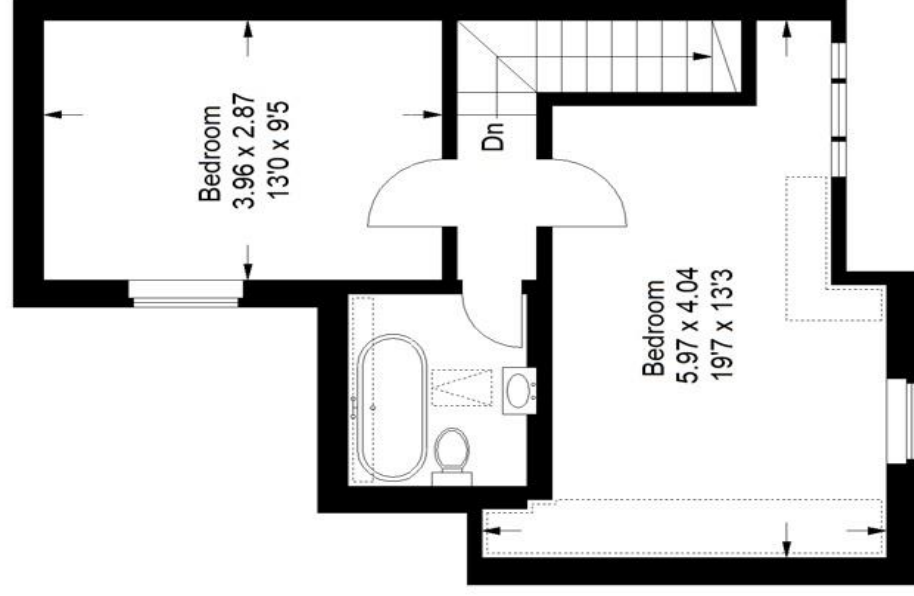
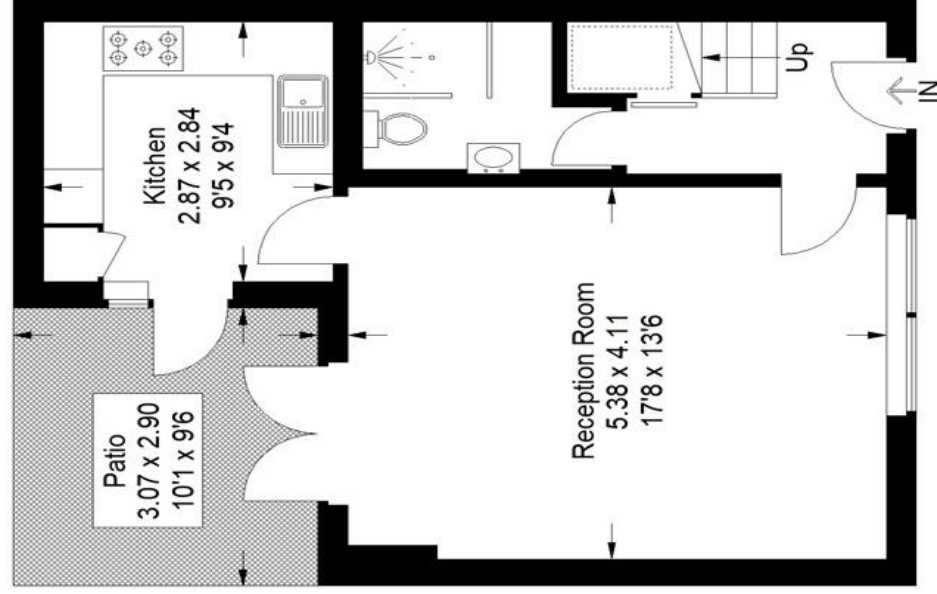
## Queenthorpe Mews, SE26

Approximate Gross Internal Area

80.5 sq m / 866 sq ft



 = Reduced headroom below 1.5 m / 5'0"



Copyright [www.pedderproperty.com](http://www.pedderproperty.com) © 2024

These plans are for representation purposes only as defined by RICS - Code of Measuring Practice. Not drawn to Scale. Windows and door openings are approximate. Please check all dimensions, shapes and compass bearings before making any decisions reliant upon them.