



Plot 8 Springfield Meadow

Alnwick, Northumberland, NE66 2NY

Guide Price £175,000

Description

A superb opportunity to purchase this serviced building plot, which is located in this much sought after residential area, within easy walking distance to the centre of this attractive Northumberland town, which is home to the famous Alnwick Castle and Gardens. There are a variety of shops and supermarkets, cafés, pubs and restaurants, a theatre, a hospital and other services.

The generous sized building plot is bounded by mature trees to give seclusion and will have south facing gardens to the rear of the house. The plot forms part of this quiet cul-de-sac with mains services on or next to the plot.

Agency Information

OFFICE OPENING HOURS

Monday - Friday 9.00 - 16.30

Saturday by Appointment

FIXTURES & FITTINGS

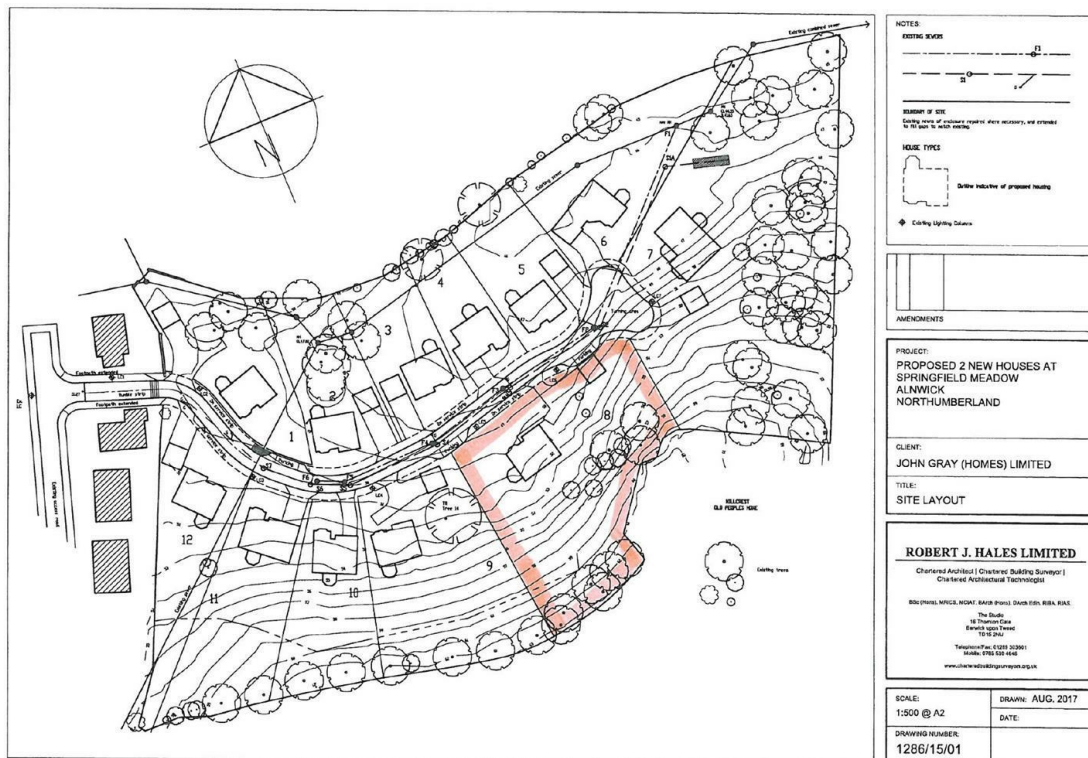
Items described in these particulars are included in the

sale, all other items are specifically excluded. All heating systems and their appliances are untested.

This brochure including photography was prepared in accordance with the sellers instructions.

VIEWING

Strictly by appointment with the selling agent and viewing guidelines due to Coronavirus (Covid-19) to be adhered to.



Important Information You may download, store and use the material for your own personal use and research. You may not republish, retransmit, redistribute or otherwise make the material available to any party or make the same available on any website, online service or bulletin board of your own or of any other party or make the same available in hard copy or in any other media without the website owner's express prior written consent. The website owner's copyright must remain on all reproductions of material taken from this website.

Berwick Office
36 Hide Hill, Berwick-upon-Tweed
Northumberland, TD15 1AB

T: (01289) 307571
F: (01289) 302948
E: berwick@aitchisons.co

Wooler Office
25 High Street, Wooler
Northumberland, NE71 6BU

T: (01668) 281819
F: (01668) 281717
E: wooler@aitchisons.co



Zoopa.co.uk



aitchisons
property centre