



## 33a Main Street

Lowick, Berwick-upon-Tweed, TD15 2UD

**Offers In The Region Of £280,000**

[www.aitchisons.co](http://www.aitchisons.co)





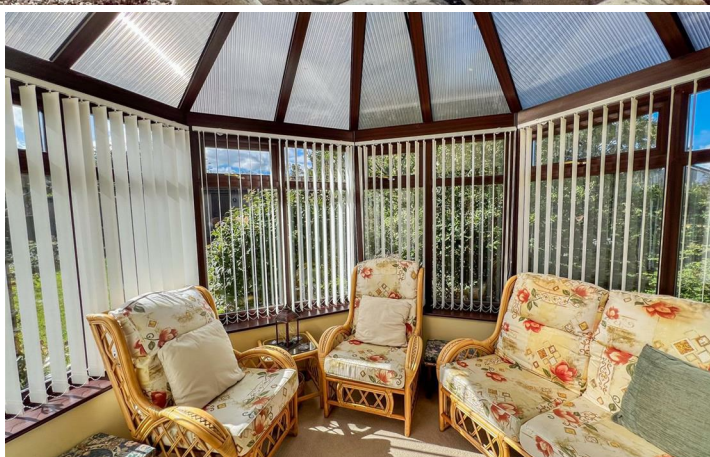
Quietly positioned in the centre of this highly popular Northumberland village, this well-proportioned two-bedroom detached bungalow combines comfort, privacy, and everyday convenience, making it ideal for buyers of all ages.

The interior comprises of spacious living room with a feature fireplace and double patio doors leading to a conservatory which takes advantage of the views over the front garden. There is a well appointed kitchen/dining area with an excellent range of light oak units with appliances and ample space for a table and chairs. The bungalow has two generous double bedrooms with fitted wardrobes and a modern shower room. The property benefits from full double glazing and partial electric heating.

Enclosed lawn garden at the front of the bungalow with well stocked flowerbeds and shrubberies being taken advantage of by a summerhouse, there are also flowerbeds at the side and rear of the property. Ample parking for a number of vehicles in front of the two garages and workshop, which offer secure parking or storage.

Lowick is a picturesque village that boasts a strong sense of community and easy access to local amenities. Residents can enjoy the facilities in the village which include a general store, two public houses, a village hall, a church and a first school. The towns of Berwick-upon-Tweed (10 miles) and Wooler (8 miles) offer a larger selection of shopping and recreational facilities.

Contact our Wooler office to arrange a viewing.





## Kitchen/Dining Area

18'5 x 10'2 (5.61m x 3.10m)

Entrance door at the side of the bungalow giving access to the kitchen, which has an excellent range of light oak wall and floor units with marble effect worktop surfaces with a tiled splashback. Electric freestanding cooker, fridge freezer and an automatic washing machine. Stainless steel sink and drainer below one of the two windows at the side, there are also four windows at the front. Night storage heater, recessed ceiling spotlights and nine power points.

## Hall

11'8 x 6'6 (3.56m x 1.98m)

With a built-in double airing cupboard housing the hot water tank and a shelved double storage cupboard. Access to the loft and two power points.

## Living Room

21'8 x 12'9 (6.60m x 3.89m)

A spacious dual aspect reception room with two windows at the side and double patio doors to the conservatory. Feature fireplace with a pine surround and tiled inset and hearth. Night storage heater.

## Conservatory

8' x 10'8 (2.44m x 3.25m)

A good sized Victorian style conservatory which is glazed on all sides taking advantage of the views over the gardens at the front. Glazed entrance door giving access to the side and a double wall light.

## Bedroom 1

14'5 x 9'5 (4.39m x 2.87m)

A double bedroom with two built-in double wardrobes and a double window to the side. Electric heater.

## Bedroom 2

10'6 x 9'5 (3.20m x 2.87m)

Another double bedroom with two built-in double wardrobes, a window at the side of the bungalow and a night storage heater.

## Shower Room

7'4 x 6'5 (2.24m x 1.96m)

Fitted with a white three-piece suite which includes a double shower cubicle with an electric shower, a toilet and a wash hand basin with a mirrored medicine cabinet above. Frosted window at the side, a heated towel rail and a wall fan heater.

## Garden

Good size lawn garden at the front of the property with flowerbeds and shrubbery surrounds. There is a summerhouse taking advantage of the garden. Flowerbeds at the side and rear of the property.

## Garages

There are two garages with parking for a number of vehicles. The garages have lighting and power and there is a workshop attached to the garages.

## General Information

Full double glazing.

Partial electric heating.

All mains services are connected except for gas.

Council Tax Band - C

All fitted floor coverings are included in the sale.

Tenure - Freehold.

Energy Rating - TBC.

## Agency Information

OFFICE OPENING HOURS

Monday - Friday 9.00 - 17.00

Saturday 9.00 - 12.00

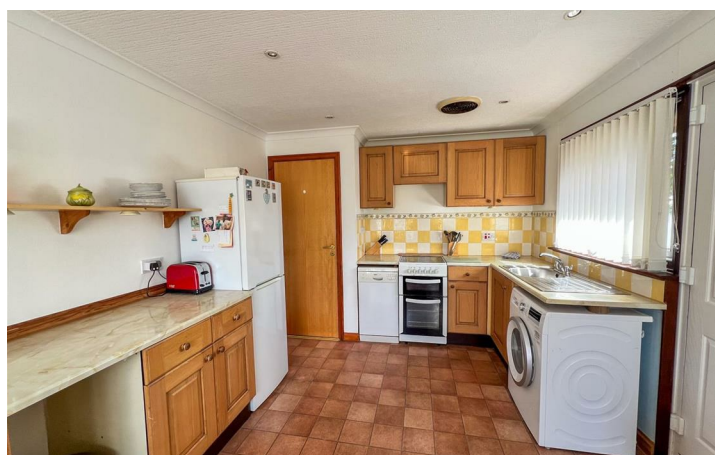
## FIXTURES & FITTINGS

Items described in these particulars are included in the sale, all other items are specifically excluded. All heating systems and their appliances are untested.

This brochure including photography was prepared in accordance with the sellers instructions.

## VIEWING

Strictly by appointment with the selling agent.











GROUND FLOOR  
915 sq.ft. (85.0 sq.m.) approx.



TOTAL FLOOR AREA : 915 sq.ft. (85.0 sq.m.) approx.

Whilst every attempt has been made to ensure the accuracy of the floorplan contained here, measurements of doors, windows, rooms and any other items are approximate and no responsibility is taken for any error, prospective purchaser. The services, systems and appliances shown have not been tested and no guarantee is made. Made with Metronix ©2025

Important Information You may download, store and use the material for your own personal use and research. You may not republish, retransmit, redistribute or otherwise make the material available to any party or make the same available on any website, online service or bulletin board of your own or of any other party or make the same available in hard copy or in any other media without the website owner's express prior written consent. The website owner's copyright must remain on all reproductions of material taken from this website.

**Berwick Office**  
36 Hide Hill, Berwick-upon-Tweed  
Northumberland, TD15 1AB

T: (01289) 307571  
F: (01289) 302948  
E: [berwick@aitchisons.co](mailto:berwick@aitchisons.co)

**Wooler Office**  
25 High Street, Wooler  
Northumberland, NE71 6BU

T: (01668) 281819  
F: (01668) 281717  
E: [wooler@aitchisons.co](mailto:wooler@aitchisons.co)



**Zoopla.co.uk**

