



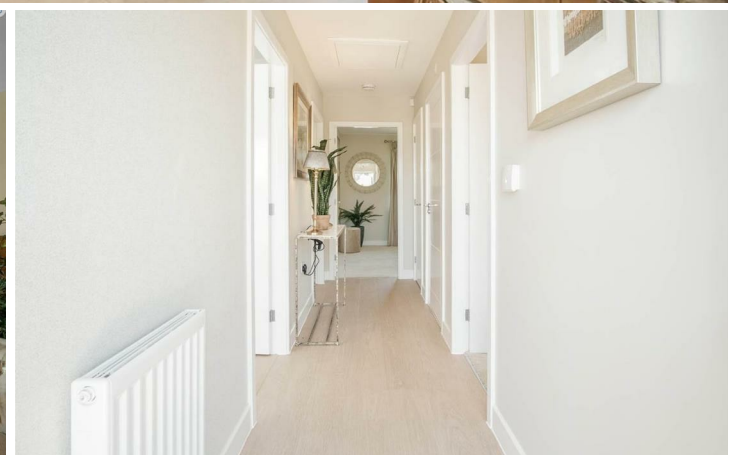
## Plot 2 Weetwood Road

Wooler, Northumberland, NE71 6AE

**Chain Free £229,950**

An excellent opportunity to purchase this new modern semi-detached bungalow, which forms part of the exclusive Kingsmead development on the outskirts of Wooler. Wooler has been voted as one of the best places to live in the north of England, with excellent facilities within the town and at the foot of the Cheviot Hills, which is ideal for walkers.

The contemporary design of this bungalow features elongated windows, which results in the interior being bright and airy with the benefits of full double glazing and gas central heating. The former showhouse comprises of a generous lounge with bi-folding doors to the garden with a patio, the kitchen has been upgraded to a Gold specification and includes an integrated dish washing machine, a fridge freezer and a dining area. The main bedroom sits to the rear of the bungalow and features a fitted sliding door wardrobe, the second bedroom is a generous double bedroom and there is a contemporary bathroom with Villeroy and Boch sanitaryware comprising of a bath with both a rainfall and separate hair wash shower, a toilet and a wash hand basin. This is a fantastic opportunity to purchase a ready to move into bungalow in a wonderful area of Northumberland. Call us now to make an appointment to view!



## Living Room

11'7 x 15'6 (3.53m x 4.72m)

## Kitchen/Dining Area

11'7 x 13'6 (3.53m x 4.11m)

## Bedroom 1

12'10 x 10'10 (3.91m x 3.30m)

## Bedroom 2

8'9 x 10'7 (2.67m x 3.23m)

## General Information

Pricing for the fully furnished bungalow is £239,950.

All mains are connected.

Tenure - Freehold

Draft Energy Rating - B

Council tax band - TBC

## Agency Information

OFFICE OPENING HOURS

Monday - Friday 9:00 - 17:00

Saturday 9:00 - 12:00

## FIXTURES & FITTINGS

Items described in these particulars are included in sale, all other items are specifically excluded. All services, heating systems and their appliances are untested.

## VIEWING

Strictly by appointment with the selling agent and viewing guidelines due to Coronavirus (Covid-19) to be adhered to.





Important Information You may download, store and use the material for your own personal use and research. You may not republish, retransmit, redistribute or otherwise make the material available to any party or make the same available on any website, online service or bulletin board of your own or of any other party or make the same available in hard copy or in any other media without the website owner's express prior written consent. The website owner's copyright must remain on all reproductions of material taken from this website.

**Berwick Office**  
 36 Hide Hill, Berwick-upon-Tweed  
 Northumberland, TD15 1AB

T: (01289) 307571  
 F: (01289) 302948  
 E: berwick@aitchisons.co

**Wooler Office**  
 25 High Street, Wooler  
 Northumberland, NE71 6BU

T: (01668) 281819  
 F: (01668) 281717  
 E: wooler@aitchisons.co



**Zoopa.co.uk**

