

# clever



## 12 Bedford Park

, Plymouth, PL4 8HN

**£131 Per week**

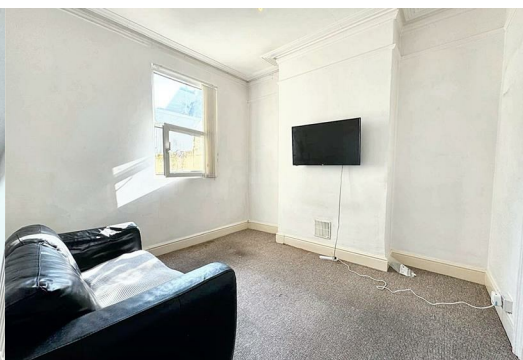


Welcome to this exceptional 5-bedroom house located in the sought-after Bedford Park area of Plymouth. This property, ideal for students, offers a fantastic living experience in a prime location just off North Hill.

Situated near a variety of shops, pubs, and local cafés, this house provides convenience at your doorstep. The main bus routes on Mutley Plain are within a short walking distance, ensuring easy access to all parts of the city.

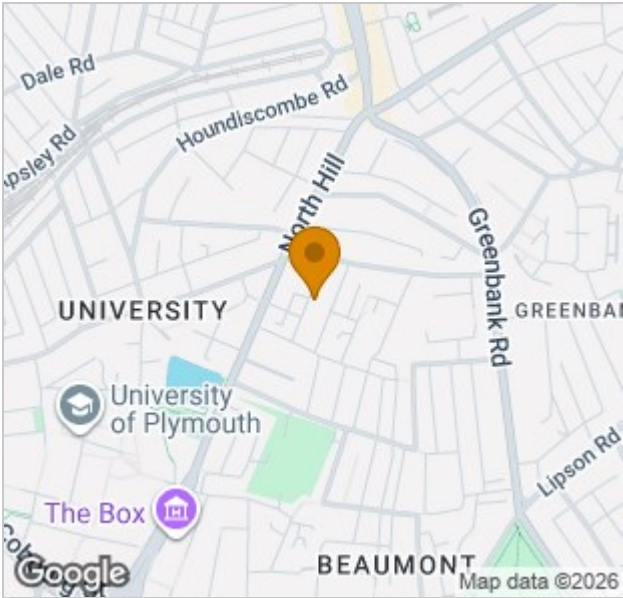
Each of the 5 bedrooms in this house of multiple occupancy is generously sized, offering ample space for comfortable living. The rooms come fully furnished with essential items such as a bed, wardrobe, chest of drawers, desk, and chair, providing a ready-to-move-in solution for students.

Perfectly positioned just opposite Plymouth University, this property is a mere few minutes' walk from the campus, making it an ideal choice for students looking for a convenient and comfortable living space close to their educational institution.

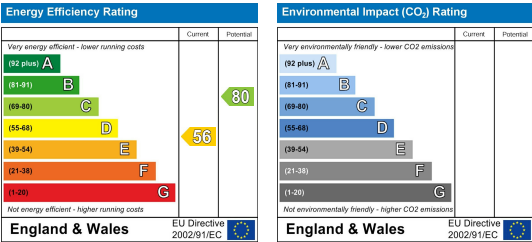




Area Map



Energy Efficiency Graph



These particulars, whilst believed to be accurate are set out as a general outline only for guidance and do not constitute any part of an offer or contract. Intending purchasers should not rely on them as statements of representation of fact, but must satisfy themselves by inspection or otherwise as to their accuracy. No person in this firms employment has the authority to make or give any representation or warranty in respect of the property.