

# clever



## 123 Beaumont Road

St Jude's, Plymouth, PL4 9EF

**£290,000**

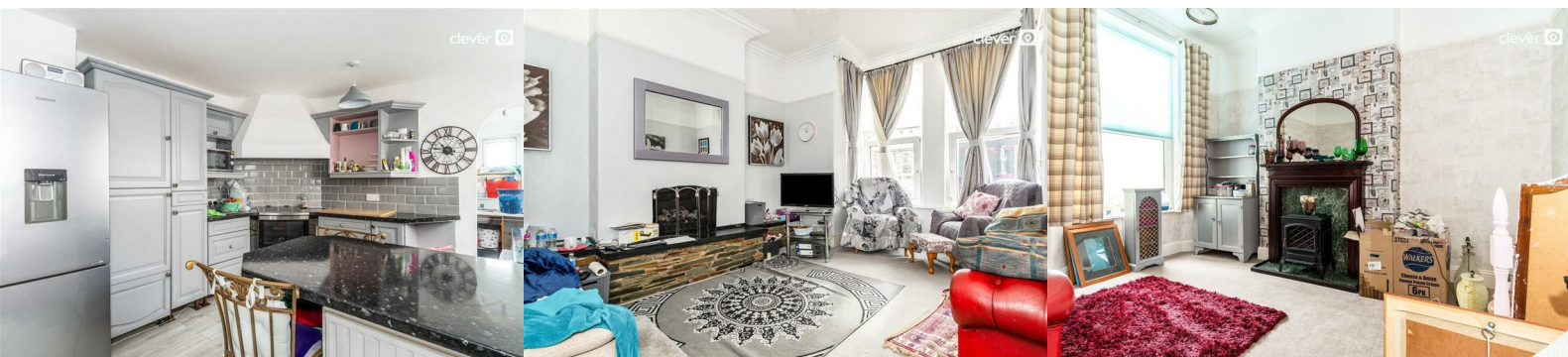


Nestled in the charming St Jude's area of Plymouth, this delightful mid-terrace house on Beaumont Road offers a perfect blend of character and modern living. The property boasts a generous 1,636 square feet of living space, making it an ideal family home.

Upon entering, you are greeted by a spacious hallway that leads to two inviting reception rooms, perfect for entertaining guests or enjoying quiet family evenings. The layout is designed to maximise space and light, creating a warm and welcoming atmosphere throughout. The property features four well-proportioned bedrooms, providing ample accommodation for families or those seeking extra space for guests or a home office.

The bathroom is conveniently located, and an additional W/C adds to the practicality of the home, ensuring that busy mornings run smoothly. The kitchen is well-equipped and offers a functional space for culinary enthusiasts, with the potential to create a dining area that overlooks the garden.

Outside, the property benefits from off-road parking for one vehicle, a valuable asset in this sought-after location. The garden offers a private outdoor space, perfect for relaxation or entertaining during the warmer



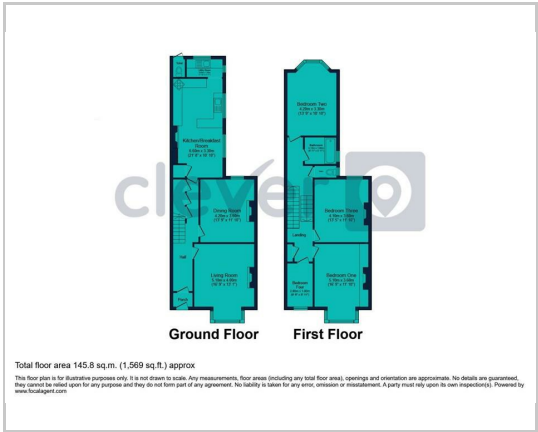




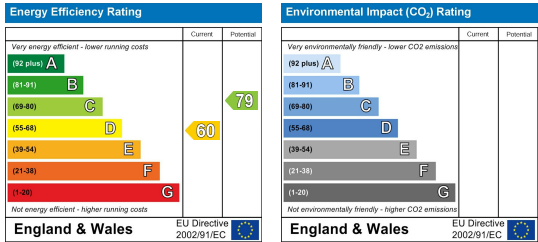
## Area Map



## Floor Plans



## Energy Efficiency Graph



These particulars, whilst believed to be accurate are set out as a general outline only for guidance and do not constitute any part of an offer or contract. Intending purchasers should not rely on them as statements of representation of fact, but must satisfy themselves by inspection or otherwise as to their accuracy. No person in this firm's employment has the authority to make or give any representation or warranty in respect of the property.

2 Old Town Street, Plymouth, PL1 1DP  
 Tel: 01752421911 Email: sales@stayclever.co.uk <https://www.stayclever.co.uk>