

clever



Room 6 44 Headland Park

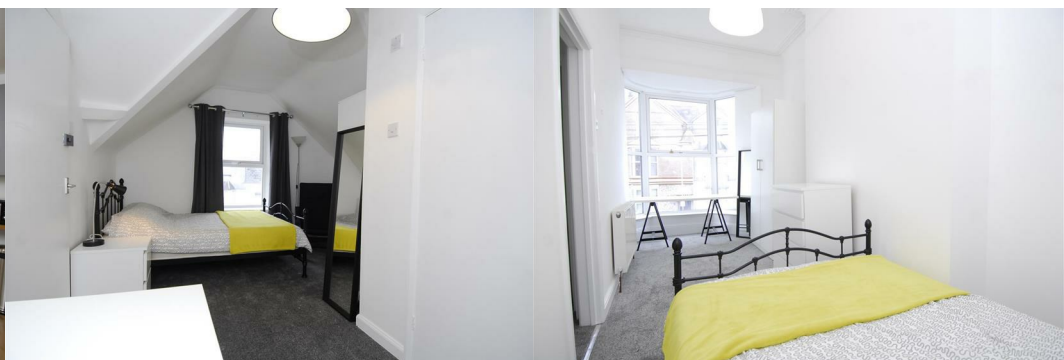
, Plymouth, PL4 8HT

£130 Per week



*- Last room remaining **

44 Headland is a beautiful, modern, 7-all ensuite bedroom property in a fantastic location, just off North Hill. All bedrooms are great size doubles, with a huge, stylish fitted kitchen and open plan lounge/dining area. This property is a great choice for Marjon students too, as it is close to local bus routes.



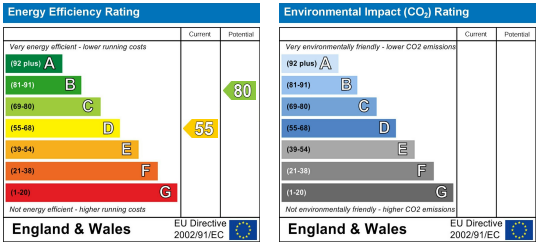
Area Map



Floor Plans



Energy Efficiency Graph



These particulars, whilst believed to be accurate are set out as a general outline only for guidance and do not constitute any part of an offer or contract. Intending purchasers should not rely on them as statements of representation of fact, but must satisfy themselves by inspection or otherwise as to their accuracy. No person in this firms employment has the authority to make or give any representation or warranty in respect of the property.