

# clever



## 9a Mount Street

, Plymouth, PL1 4GY

**£1,050 Per month**



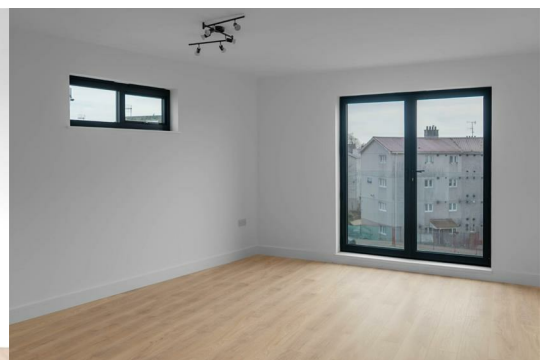
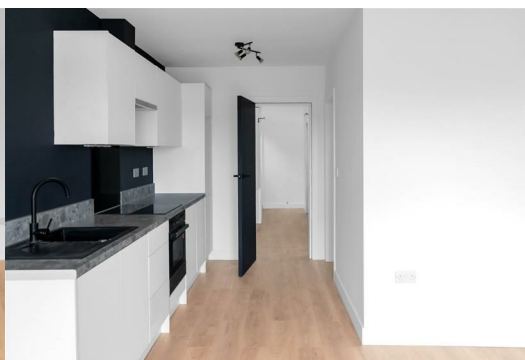
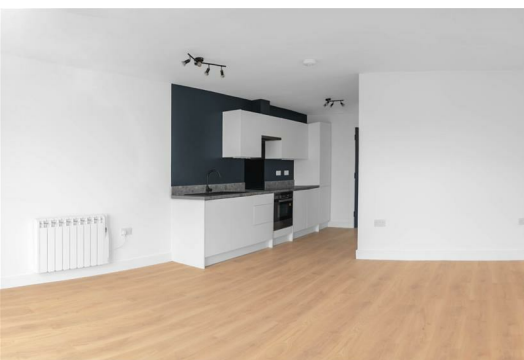
**\*\* 2 BEDROOM NEWLY RENOVATED MODERN APARTMENT WITH GARAGE**

We are pleased to offer a very modern unique 2 bedroom apartment.

This apartment has a elegant spacious open plain lounge, dining with lovely unique doors opening with a small glass balcony.  
The apartment has 2 spacious bedrooms with a large elegant shower room.

The apartment also has its own garage underneath the apartment which gives tenants peace of mind with being able to park.

Mount Street is known for its vibrant community and proximity to local amenities, including shops, parks, and schools, making it an ideal location for those who appreciate the balance of urban living with a touch of



Area Map



Floor Plans



Energy Efficiency Graph



These particulars, whilst believed to be accurate are set out as a general outline only for guidance and do not constitute any part of an offer or contract. Intending purchasers should not rely on them as statements of representation of fact, but must satisfy themselves by inspection or otherwise as to their accuracy. No person in this firms employment has the authority to make or give any representation or warranty in respect of the property.