

clever



62 Hollycroft Road

, Plymouth, PL3 6PR

Offers in excess of £200,000



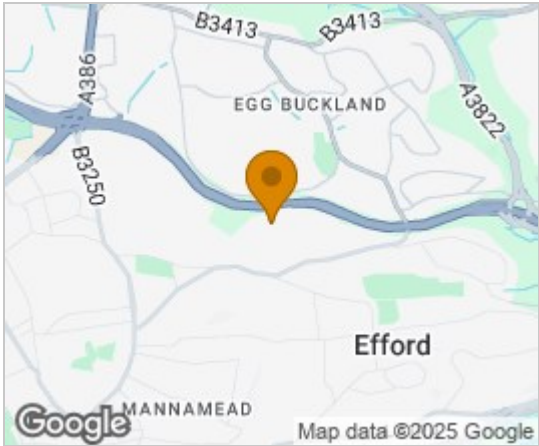
OPEN DAY 16TH OF APRIL 2PM - 3PM

DETACHED BUNGALOW INVESTMENT PROPERTY

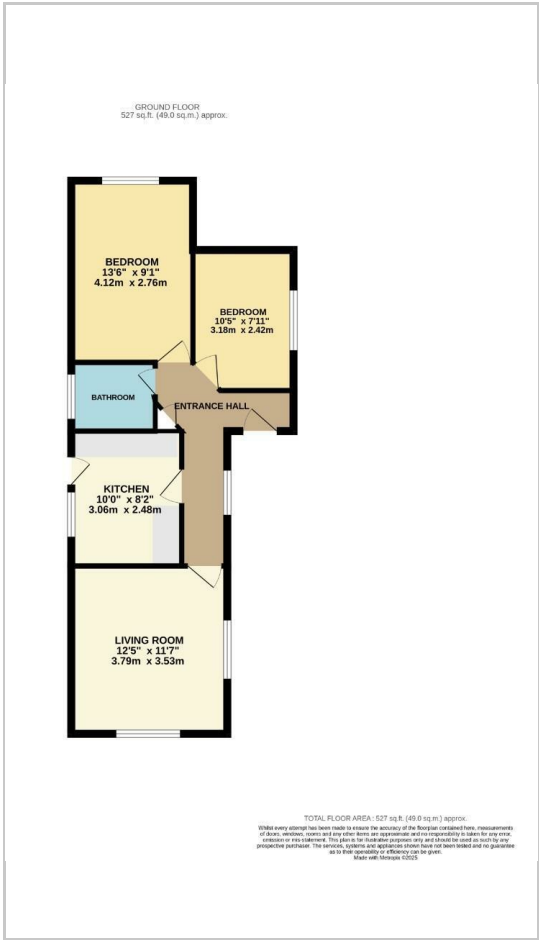
Nestled in the desirable area of Hollycroft Road, Plymouth, this charming detached bungalow presents a unique opportunity for those looking to create their dream home. Although the property is in need of renovation, it boasts a generous level plot, providing ample space for potential expansion or landscaping to suit your personal taste.



Area Map



Floor Plans



Energy Efficiency Graph



These particulars, whilst believed to be accurate are set out as a general outline only for guidance and do not constitute any part of an offer or contract. Intending purchasers should not rely on them as statements of representation of fact, but must satisfy themselves by inspection or otherwise as to their accuracy. No person in this firms employment has the authority to make or give any representation or warranty in respect of the property.