

# clever



## 50 Furzehill Road

, Plymouth, PL4 7LB

**£130**



Furzehill is a fab 5 bedroom property based in Mutley plain.

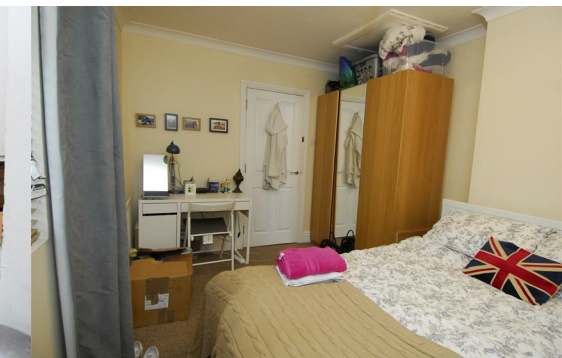
The property is situated around the corner from Aldi on Mutley Plain, the house has so much to offer and just a stones throw away. Mixture of some ENSUITES rooms, all of which are GOOD SIZED DOUBLE ROOMS.

This property is a must see with something to suit everyone! Short walk from the University and City Centre.

Student property- Available 1st September

Gas, electric water and WIFI included! (fair usage policy applies)

Council tax band B



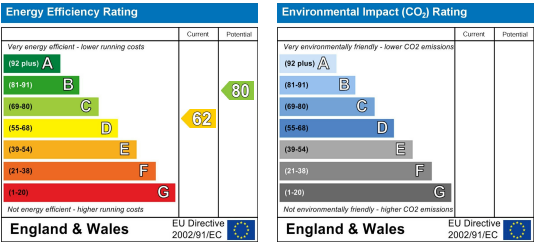
## Area Map



## Floor Plans



## Energy Efficiency Graph



These particulars, whilst believed to be accurate are set out as a general outline only for guidance and do not constitute any part of an offer or contract. Intending purchasers should not rely on them as statements of representation of fact, but must satisfy themselves by inspection or otherwise as to their accuracy. No person in this firm's employment has the authority to make or give any representation or warranty in respect of the property.