

# clever



## 12 Glen Park Avenue

, Plymouth, PL4 6BA

**£125 Per week**

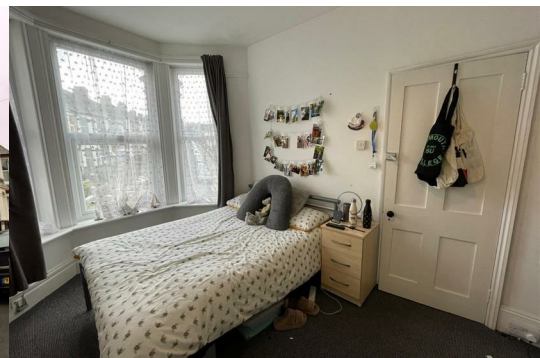


Welcome to Glen Park Avenue, Plymouth - a charming 4-bedroom house nestled in an ideal location just off North Road East. This property is a perfect gem for those seeking a convenient lifestyle, being just a short stroll away from Plymouth University and Mutley Plain.

As you step inside, you'll be greeted by a well-designed layout featuring a cosy living room, a fully equipped kitchen, and a bathroom with both a bath and a shower - catering to all your needs. Each of the four double bedrooms is equally spacious, providing ample room for relaxation and study.

This property is not just a house, but a potential student haven due to its proximity to Plymouth University. Imagine the convenience of rolling out of bed and reaching your lectures in no time! Additionally, being close to the train station adds to the appeal of this residence, making commuting a breeze.

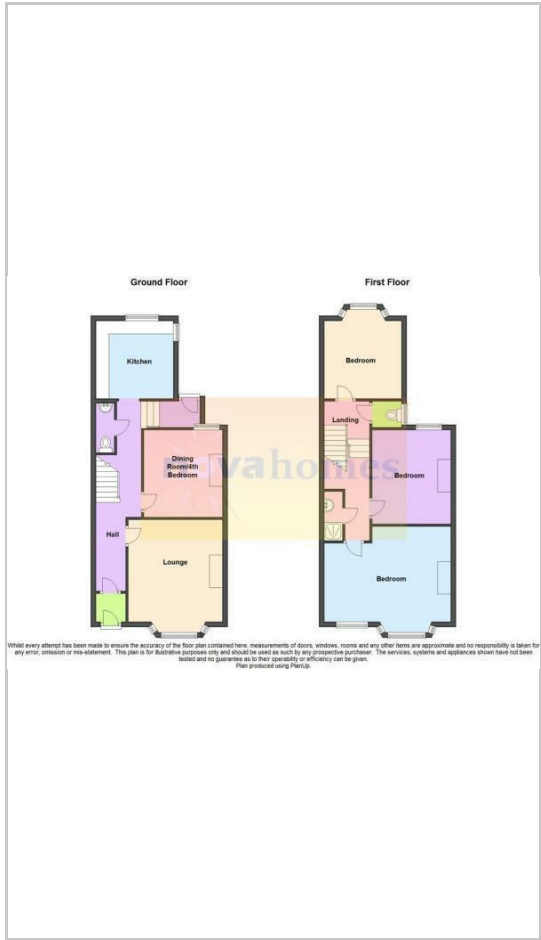
Don't miss out on the opportunity to make this house your home. With its prime location and comfortable living spaces, this property on Glen Park Avenue is a true find for those looking to embrace the vibrant lifestyle



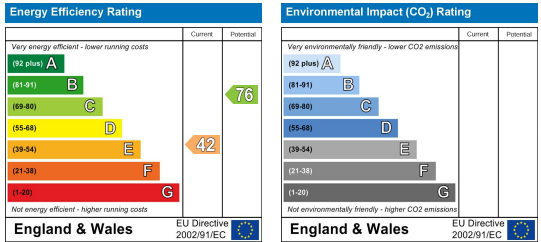
## Area Map



## Floor Plans



## Energy Efficiency Graph



These particulars, whilst believed to be accurate are set out as a general outline only for guidance and do not constitute any part of an offer or contract. Intending purchasers should not rely on them as statements of representation of fact, but must satisfy themselves by inspection or otherwise as to their accuracy. No person in this firm's employment has the authority to make or give any representation or warranty in respect of the property.