

clever



6 Lipson Road

, Plymouth, PL4 8PN

£120 Per week

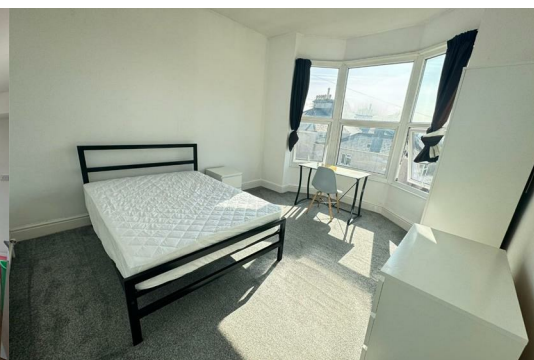


Nestled on Lipson Road in Plymouth, this impressive 8-bedroom house is a gem waiting to be discovered. Boasting a prime location near the City Centre, Plymouth University, and Plymouth College of Art, this property is ideal for both large student groups and individuals alike.

Each of the 8 bedrooms is generously equipped with a comfortable double bed, a desk for studying, and ample storage space.

The heart of this home lies in its spacious kitchen, perfect for communal cooking and dining experiences. Picture yourself unwinding in the expansive lounge area, complete with a large TV for entertainment. And when the sun is shining, step outside to the inviting outdoor space - an ideal spot for summer barbecues and gatherings.

Council tax band D
Rooms 1,2,4,5,7,8 = £120 per week
Room 3 and 6 = £110 per week



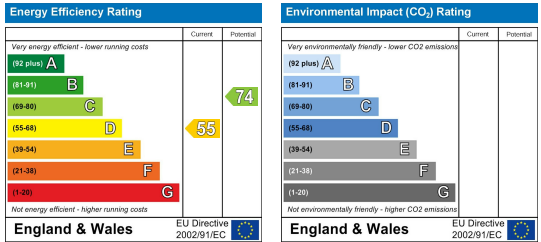
Area Map



Floor Plans



Energy Efficiency Graph



These particulars, whilst believed to be accurate are set out as a general outline only for guidance and do not constitute any part of an offer or contract. Intending purchasers should not rely on them as statements of representation of fact, but must satisfy themselves by inspection or otherwise as to their accuracy. No person in this firms employment has the authority to make or give any representation or warranty in respect of the property.