

clever



Flat 1 20 Woodland Terrace,

, Plymouth, PL4 8NL

£220 Per week



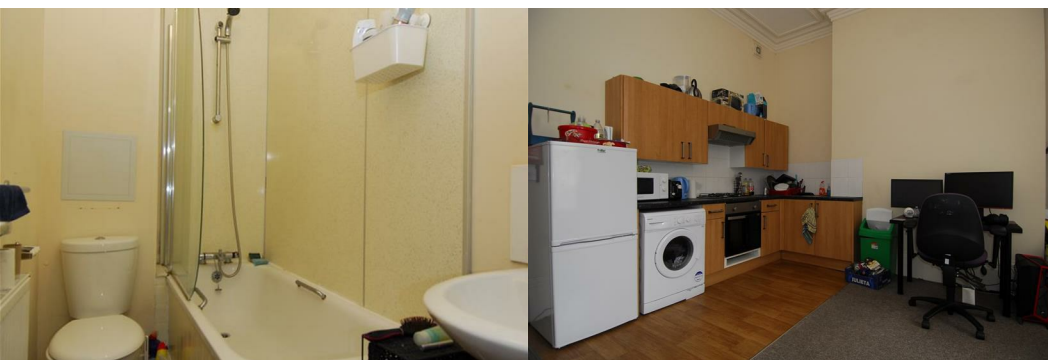
Welcome to this charming 1-bedroom apartment located at 20 Woodland Road Flat 1 in Plymouth. This property is ideal for a couple or a single student seeking a place of their own. Situated on Woodland Terrace, this apartment is conveniently close to local amenities and just a short walk away from Plymouth Business School and University Campus, making it a perfect choice for students.

As you step inside, you'll find a spacious open plan kitchen/lounge area, offering a versatile space to relax and entertain. The double bedroom provides a comfortable retreat, and the separate bathroom features a convenient shower over the bath.

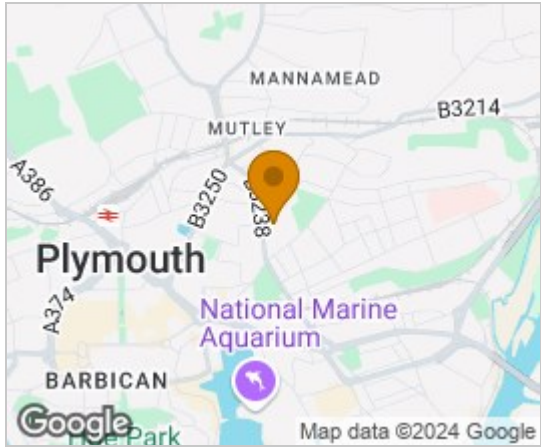
Additionally, the "first come first served" parking arrangement ensures that you'll have a spot for your vehicle when needed. Don't miss out on the opportunity to make this lovely apartment your new home. Contact us today to arrange a viewing and secure this fantastic property in Plymouth!

Student property- Available 1st September

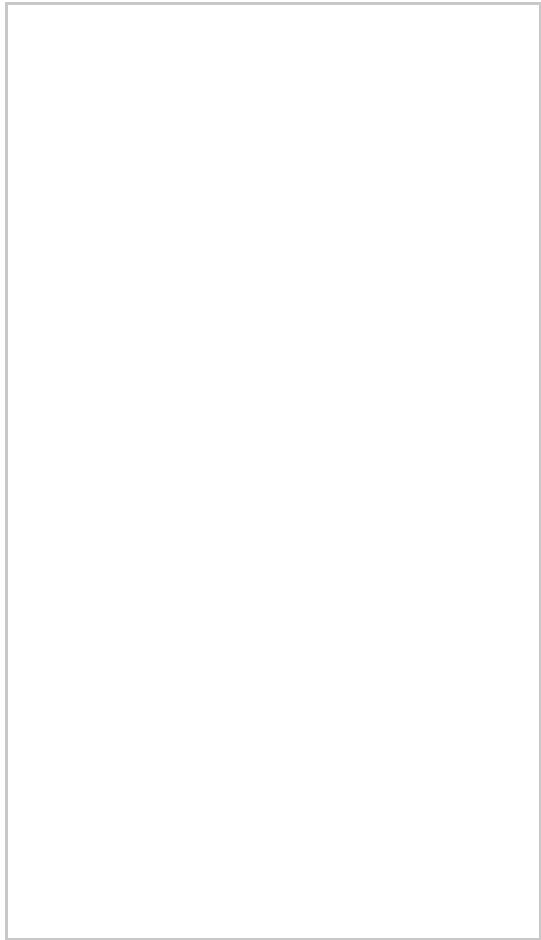
Gas, electric water and WIFI included! (fair usage policy applies)



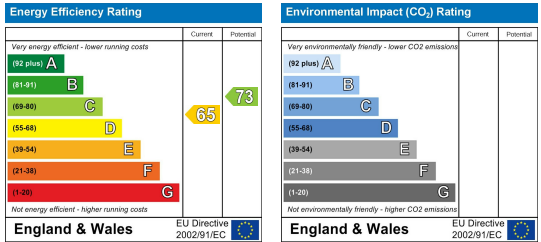
Area Map



Floor Plans



Energy Efficiency Graph



These particulars, whilst believed to be accurate are set out as a general outline only for guidance and do not constitute any part of an offer or contract. Intending purchasers should not rely on them as statements of representation of fact, but must satisfy themselves by inspection or otherwise as to their accuracy. No person in this firms employment has the authority to make or give any representation or warranty in respect of the property.