

clever



28 Beechwood Avenue

, Plymouth, PL4 6PW

£115

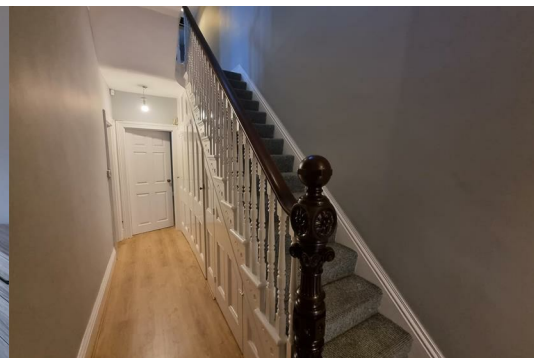


Nestled in the heart of Beechwood Avenue, this charming 6-bedroom house is a true gem waiting to be discovered. As you step inside, you'll be greeted by the abundance of natural light streaming through the large windows in each of the double bedrooms, creating a warm and inviting atmosphere.

The property boasts a well-appointed kitchen area complete with a breakfast bar, perfect for enjoying your morning coffee. The spacious lounge provides ample space for relaxation, while the separate conservatory offers a unique dining experience with a view. And let's not forget the luxurious freestanding bathtub, ideal for unwinding after a long day.

One of the standout features of this property is the outside space, a rare find in the bustling city. Whether you fancy al fresco dining or simply soaking up the sun, this outdoor area is sure to impress.

Conveniently located in close proximity to Mutley Plain, the train station, and Plymouth University, this property offers both comfort and convenience. Whether you're a student looking for a stylish and comfortable home or a family in need of extra space, this house ticks all the boxes. Don't miss out on the opportunity to make this house your home sweet home.



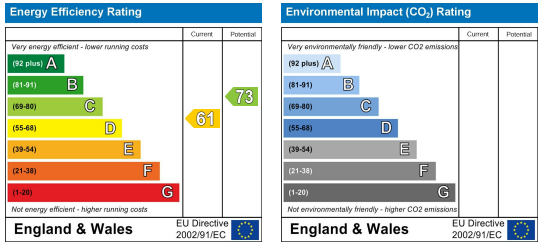
Area Map



Floor Plans



Energy Efficiency Graph



These particulars, whilst believed to be accurate are set out as a general outline only for guidance and do not constitute any part of an offer or contract. Intending purchasers should not rely on them as statements of representation of fact, but must satisfy themselves by inspection or otherwise as to their accuracy. No person in this firm's employment has the authority to make or give any representation or warranty in respect of the property.