

# clever



## 14 Pomphlett Road

, Plymouth, PL9 7BL

**Guide price £150,000**



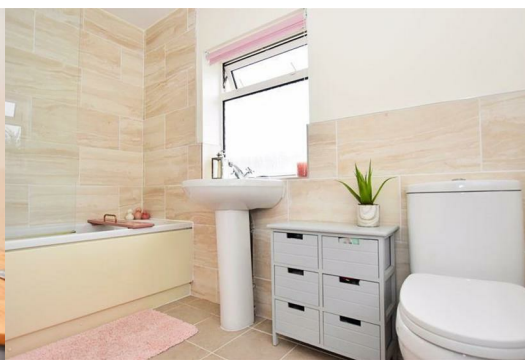
\*\*\*GUIDE £150,000 TO £160,000\*\*\*

Welcome to this charming first-floor apartment located on Pomphlett Road in Plymouth. This older property, built in 1900, exudes character and history, making it a unique find in the sought-after area.

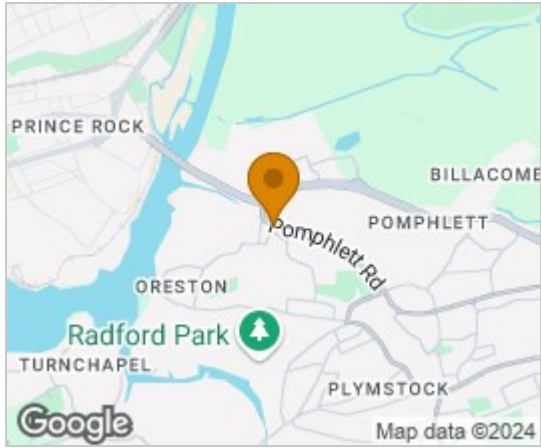
As you step inside, you are greeted by a cosy lounge featuring a lovely bay window, perfect for relaxing and enjoying the natural light. The property boasts two bedrooms, offering ample space for a small family, guests, or even a home office.

One of the highlights of this apartment is the modern and spacious fitted kitchen, ideal for whipping up delicious meals and entertaining friends and family. With two bathrooms, convenience and privacy are guaranteed for all residents.

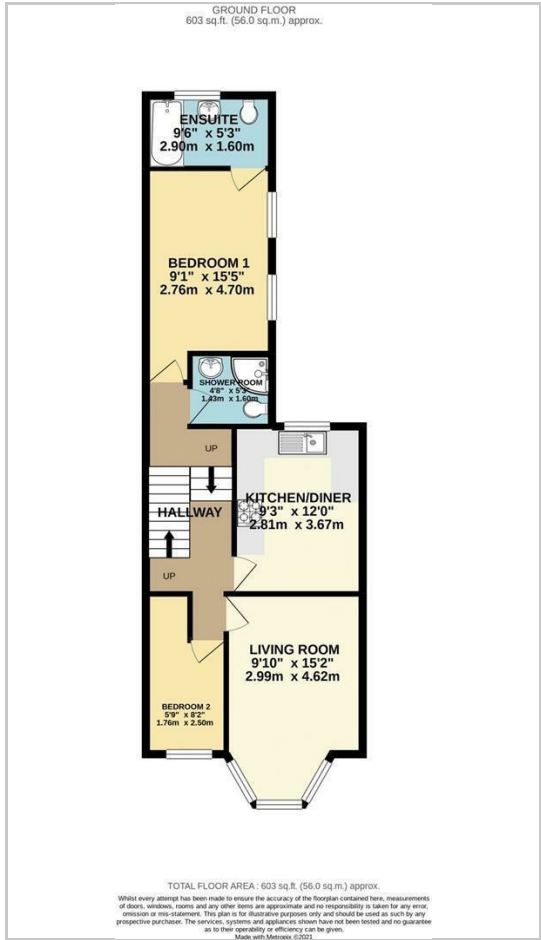
Parking is made easy with space for one vehicle, ensuring you never have to worry about finding a spot after a long day. The off-street parking adds an extra layer of security and convenience to this already desirable



# Area Map



# Floor Plans



# Energy Efficiency Graph



These particulars, whilst believed to be accurate are set out as a general outline only for guidance and do not constitute any part of an offer or contract. Intending purchasers should not rely on them as statements of representation of fact, but must satisfy themselves by inspection or otherwise as to their accuracy. No person in this firm's employment has the authority to make or give any representation or warranty in respect of the property.