

clever



36 Houndiscombe Road

, Plymouth, PL4 6HF

Guide price £420,000



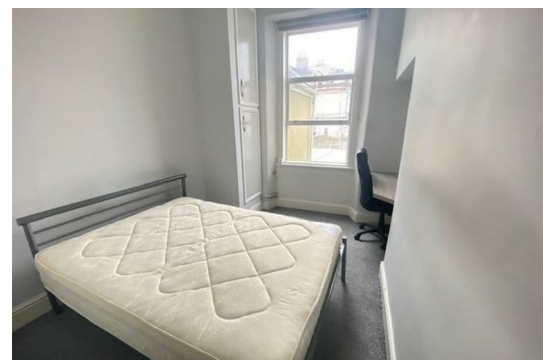
GUIDE £420,000 TO £430,000

Nestled in the charming Houndiscombe Road, Plymouth, this mid-terrace house boasts a unique opportunity for a savvy investor looking for a versatile property. With four reception rooms, four bedrooms, and four bathrooms, this older property has been cleverly arranged into four self-contained flats - a superb investment indeed!

Currently fully let, this property generates a substantial £43,816 in gross income, making it a lucrative venture. Its prime location within walking distance to Plymouth University adds to its appeal, promising a steady stream of potential tenants.

Inside, the property features modern kitchens and bathrooms, adding a touch of contemporary elegance to its classic charm. Whether you're looking to expand your property portfolio or seeking a spacious home with rental potential, a viewing of this property is essential to truly appreciate its value and potential.

Agents Note - This property has been awarded a grant to install Thermaroof to Flat 2. Contact Agent for more information.



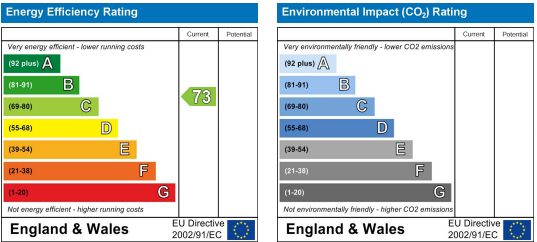
Area Map



Floor Plans



Energy Efficiency Graph



These particulars, whilst believed to be accurate are set out as a general outline only for guidance and do not constitute any part of an offer or contract. Intending purchasers should not rely on them as statements of representation of fact, but must satisfy themselves by inspection or otherwise as to their accuracy. No person in this firm's employment has the authority to make or give any representation or warranty in respect of the property.

51 North Hill, Plymouth, PL4 8HZ
 Tel: 01752421911 Email: ian@stayclever.co.uk <https://www.stayclever.co.uk>