

# clever



## 10 Napier Terrace, Flat 3

, Plymouth, PL4 6ER

**£120**



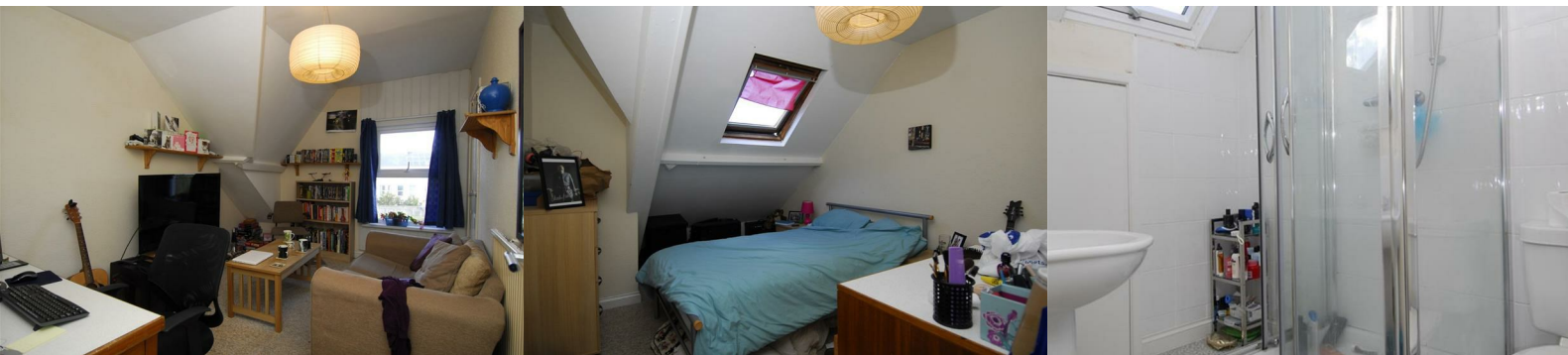
\*\* Student property available from September 2024\*\*

This top floor, 2 bed flat just off Mutley Plain is in such a convenient location, just off Mutley Plain and a short walk from the main university campus. Decent sized kitchen and bathroom along with lots of storage space!

Room 1: £120

Room 2: £120

Council tax band A



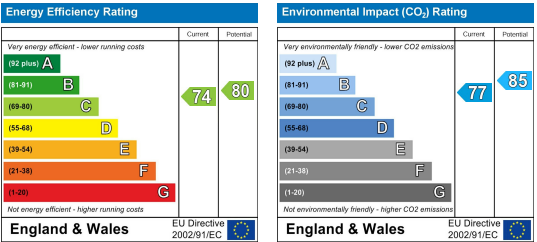
### Area Map



### Floor Plans



### Energy Efficiency Graph



These particulars, whilst believed to be accurate are set out as a general outline only for guidance and do not constitute any part of an offer or contract. Intending purchasers should not rely on them as statements of representation of fact, but must satisfy themselves by inspection or otherwise as to their accuracy. No person in this firm's employment has the authority to make or give any representation or warranty in respect of the property.