

clever



26 Salisbury Road, Studio

, Plymouth, PL4 8QT

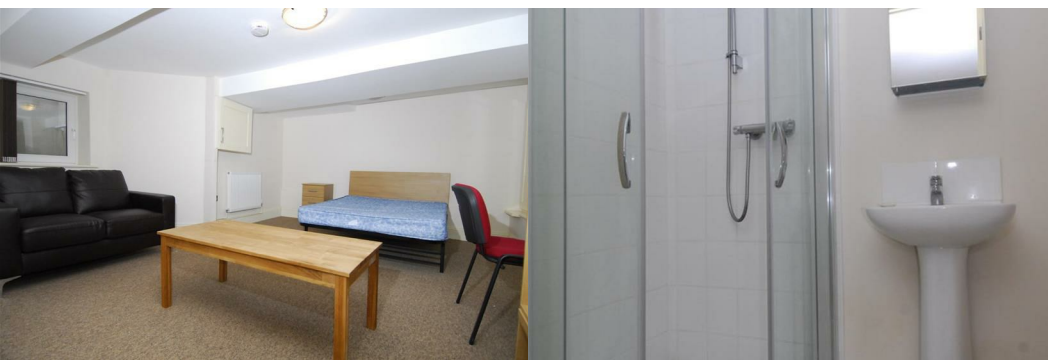
£170



** Student Property Available September 2024 **

Located only a 10-minute walk away from the city centre. This property has an outside This large studio can be accessed through the main house above or via the courtyard. It offers a spacious living area with plenty of storage, and a separate kitchen section with room for a dining table.

£170 PPW



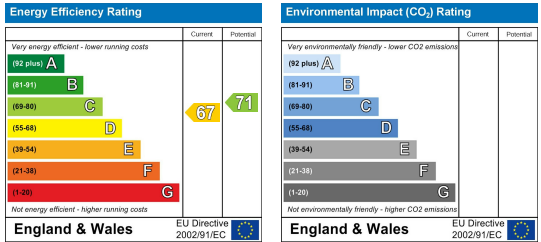
Area Map



Floor Plans



Energy Efficiency Graph



These particulars, whilst believed to be accurate are set out as a general outline only for guidance and do not constitute any part of an offer or contract. Intending purchasers should not rely on them as statements of representation of fact, but must satisfy themselves by inspection or otherwise as to their accuracy. No person in this firm's employment has the authority to make or give any representation or warranty in respect of the property.