

clever



Allington Dixon Terrace

, Yealmpton, PL8 2NB

Offers in excess of £600,000



Nestled in the charming Dixon Terrace of Yealmpton, this stunning detached residence is a true gem waiting to be discovered. Boasting four bedrooms and two bathrooms, this older property exudes character and warmth, perfect for those seeking a touch of tradition.

As you step inside, you are greeted by three inviting reception rooms, offering ample space for entertaining guests or simply unwinding after a long day. The extended modern kitchen is a focal point of the home, providing a perfect blend of style and functionality for all your culinary adventures.

One of the highlights of this property is its beautiful extensive gardens, a tranquil oasis where you can escape the hustle and bustle of everyday life. Imagine enjoying a cup of tea on a sunny morning or hosting a summer barbecue in this picturesque setting.

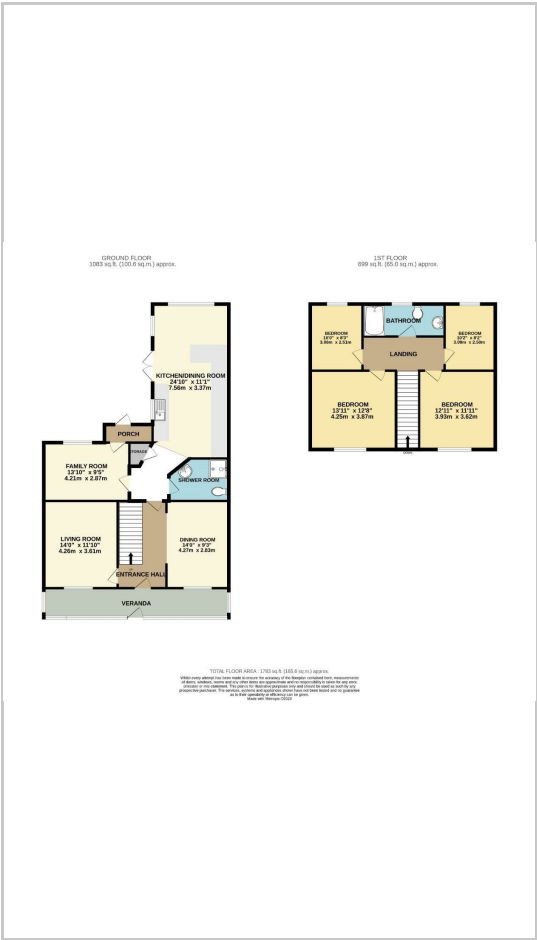
Situated in a highly desirable location, this property offers not just a house, but a lifestyle. With parking for one vehicle, convenience is at your doorstep. Whether you're looking for a peaceful retreat or a place to create



Area Map



Floor Plans



Energy Efficiency Graph



These particulars, whilst believed to be accurate are set out as a general outline only for guidance and do not constitute any part of an offer or contract. Intending purchasers should not rely on them as statements of representation of fact, but must satisfy themselves by inspection or otherwise as to their accuracy. No person in this firm's employment has the authority to make or give any representation or warranty in respect of the property.