

clever



5 Quaker Lane

, Plymouth, PL3 4FA

£1,800 Per month



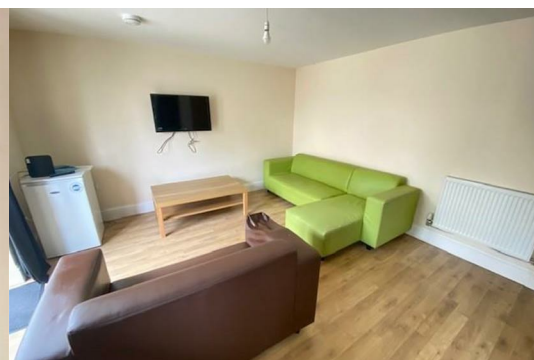
***AVAILABLE 1st SEPTEMBER 2024 ***

***** DIRECT BUS ROUTES TO HOSPITAL *****

BEAUTIFUL FIVE DOUBLE BEDROOM PEVERELL TOWNHOUSE WITH GARDEN AND PARKING!

Situated in what is considered one of Plymouth's most desirable locations and within walking distance of Hyde Park Primary, beautiful Mutley Park and a wealth of local amenities this modern Town House is a must view.

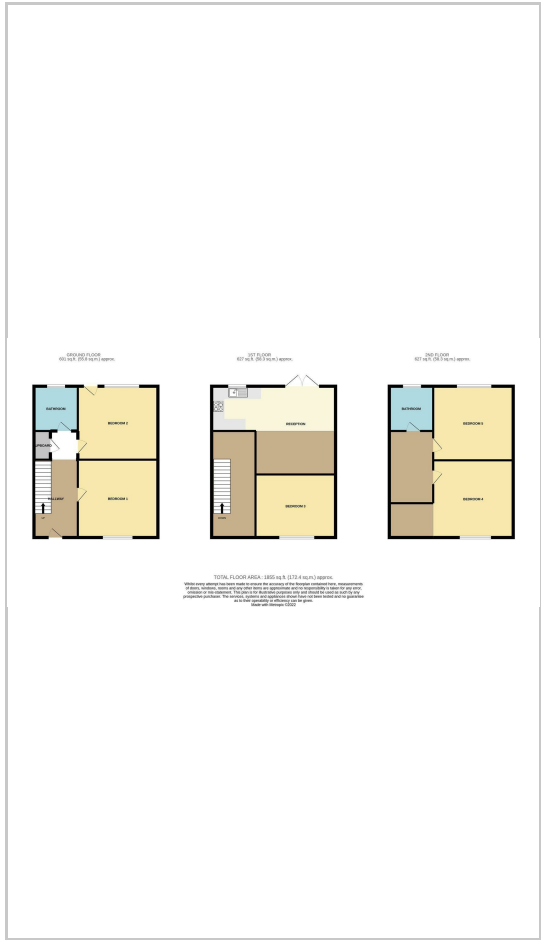
The accommodation is spread over THREE floors comprising on the ground floor Entrance Hall, TWO DOUBLE BEDROOMS and MODERN BATHROOM, first floor comprising open plan Living/Kitchen area having a range of integrated appliances and further double Bedroom. Second floor houses two further double Bedrooms and Bathroom. Additional benefits included enclosed rear Garden and Allocated Parking. Rent £1800 - Deposit £1800. Council Tax Band C. EPC B.



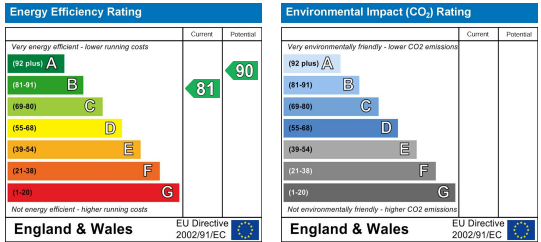
Area Map



Floor Plans



Energy Efficiency Graph



These particulars, whilst believed to be accurate are set out as a general outline only for guidance and do not constitute any part of an offer or contract. Intending purchasers should not rely on them as statements of representation of fact, but must satisfy themselves by inspection or otherwise as to their accuracy. No person in this firm's employment has the authority to make or give any representation or warranty in respect of the property.