

clever



10 Connaught Avenue

, Plymouth, PL4 7BX

Guide price £150,000



GUIDE £150,000 TO £160,000

SPACIOUS, WELL PRESENTED GROUND FLOOR APARTMENT LOCATED IN A DESIRABLE, CENTRAL LOCATION WITH THE BENEFIT OF OFF STREET PARKING

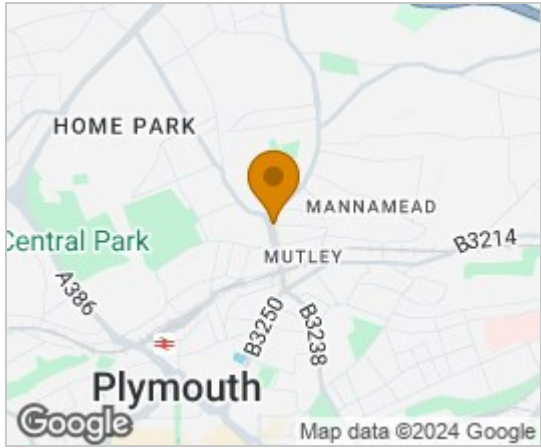
Ground Floor Flat featuring two double bedrooms and benefitting from rear communal off road parking. This converted flat is set within a double fronted Victorian period property, situated in the heart of Mutley & within close proximity of Plymouth City Centre & University.

The property comprises entrance hall, spacious lounge, fitted kitchen with matching wall & base units, three generous double bedrooms and a bathroom. Perfectly suited to either First Time Buyer or Investor making this a must view property!

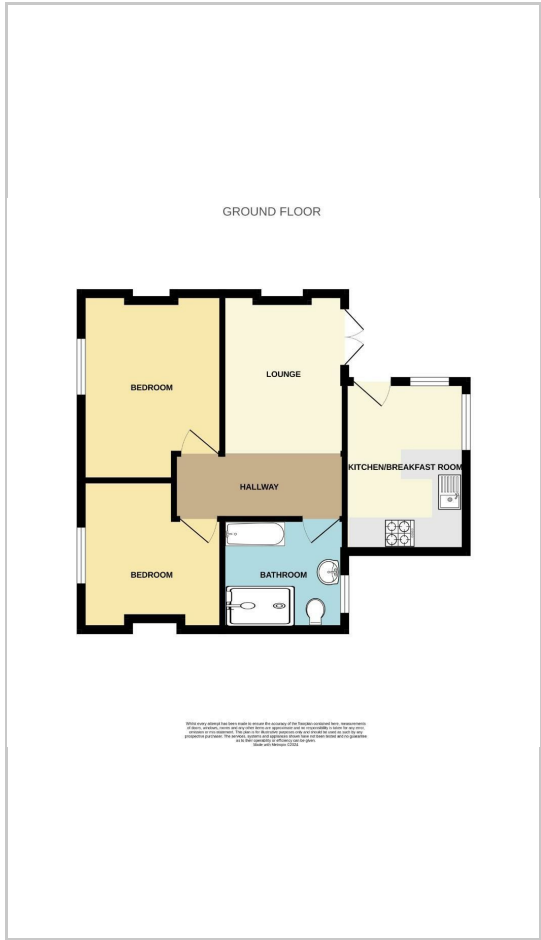
EPC C. COUNCIL TAX BAND A.



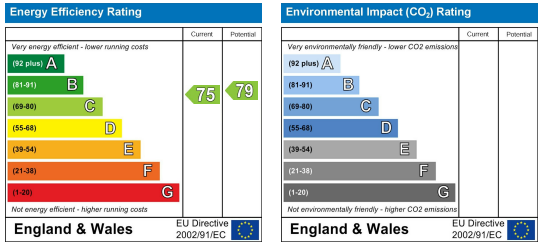
Area Map



Floor Plans



Energy Efficiency Graph



These particulars, whilst believed to be accurate are set out as a general outline only for guidance and do not constitute any part of an offer or contract. Intending purchasers should not rely on them as statements of representation of fact, but must satisfy themselves by inspection or otherwise as to their accuracy. No person in this firms employment has the authority to make or give any representation or warranty in respect of the property.