

clever



20 Connaught Avenue

, Plymouth, PL4 7BX

£1,100 Per month



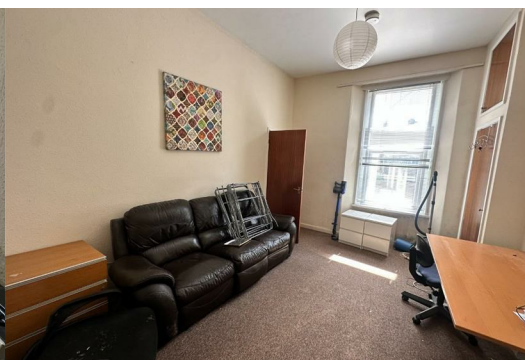
We have a SPACIOUS 2/3 bedroom ground floor APARTMENT suitable for a FAMILY or 3 SHARERS with PARKING.

The property is furnished with TWO LARGE BEDROOMS and TWO LARGE RECEPTION ROOMS a bathroom and a kitchen with a rear exit and Spiral Staircase leading to the rear PARKING SPACE.

The property is flooded with light and based in a PERFECT location for anyone needing the convenience of Mutley Plain! full of bus routes to Derriford, supermarkets and much more.

The properties rent is with water rates inclusive.

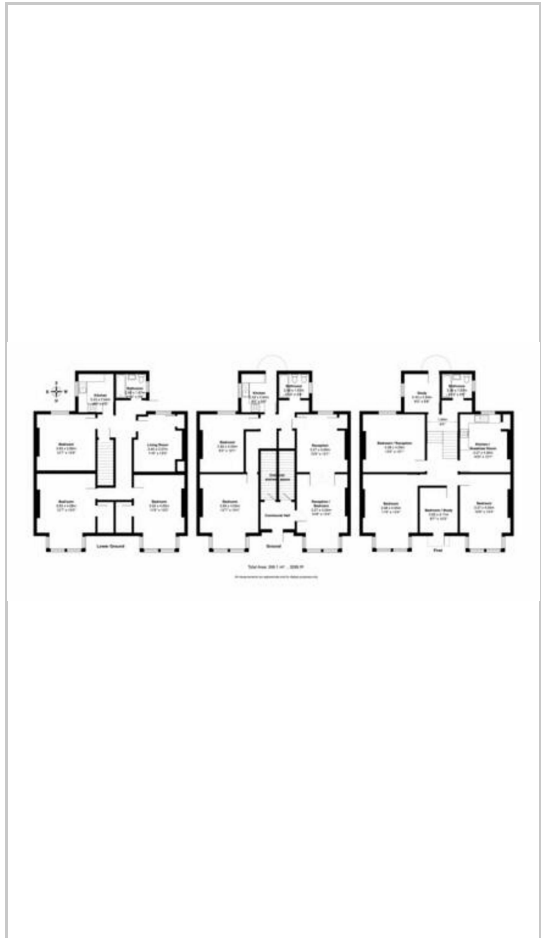
Deposit £1,269 Council Tax A EPC E



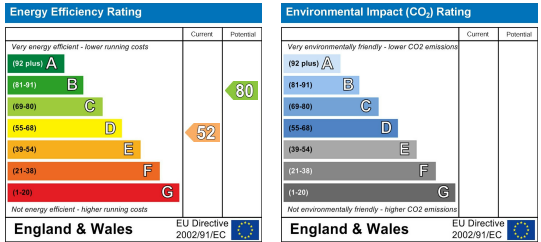
Area Map



Floor Plans



Energy Efficiency Graph



These particulars, whilst believed to be accurate are set out as a general outline only for guidance and do not constitute any part of an offer or contract. Intending purchasers should not rely on them as statements of representation of fact, but must satisfy themselves by inspection or otherwise as to their accuracy. No person in this firms employment has the authority to make or give any representation or warranty in respect of the property.