

# clever



## 14 Dale Road

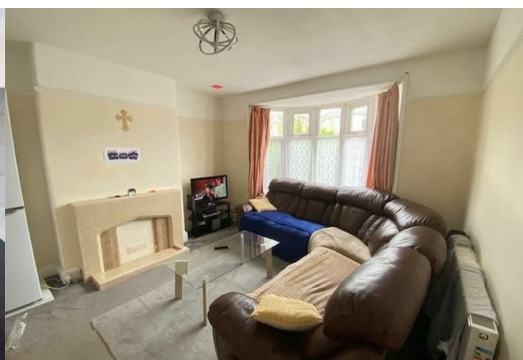
, Plymouth, PL4 6PE

**Asking price £240,000**



Beautifully presented period end terrace home situated in a desirable, central location and offered for sale with no ongoing chain. The property is well maintained and offers flexible family living. Additionally the property benefits from a detached garage, spacious rear garden (with an additional parcel of land to rear) gas fired central heating and double glazing. This is simply a must view property!

Situated along a popular avenue in Mutley, the property benefits from a superb location just minutes away from many local amenities found in nearby Mutley Plain or Plymouth City Centre. The property is also within a close distance to Plymouth University, along with Plymouth's Train Station and other useful transport links. EPC D. Council Tax Band C.



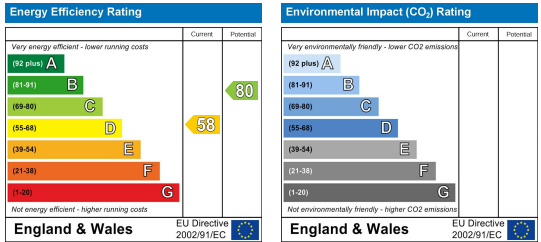
# Area Map



# Floor Plans



# Energy Efficiency Graph



These particulars, whilst believed to be accurate are set out as a general outline only for guidance and do not constitute any part of an offer or contract. Intending purchasers should not rely on them as statements of representation of fact, but must satisfy themselves by inspection or otherwise as to their accuracy. No person in this firm's employment has the authority to make or give any representation or warranty in respect of the property.

51 North Hill, Plymouth, PL4 8HZ  
 Tel: 01752421911 Email: [ian@stayclever.co.uk](mailto:ian@stayclever.co.uk) <https://www.stayclever.co.uk>