

clever



49 North Hill

, Plymouth, PL4 8HB

£550



LARGE OFFICE TO LET IN CITY CENTER LOCATION INCLUDING SECURE PARKING

Total of 29 square meters (312 square foot) of bright, airy Office space with access to communal facilities. Positioned in a vibrant, central location with excellent road frontage.

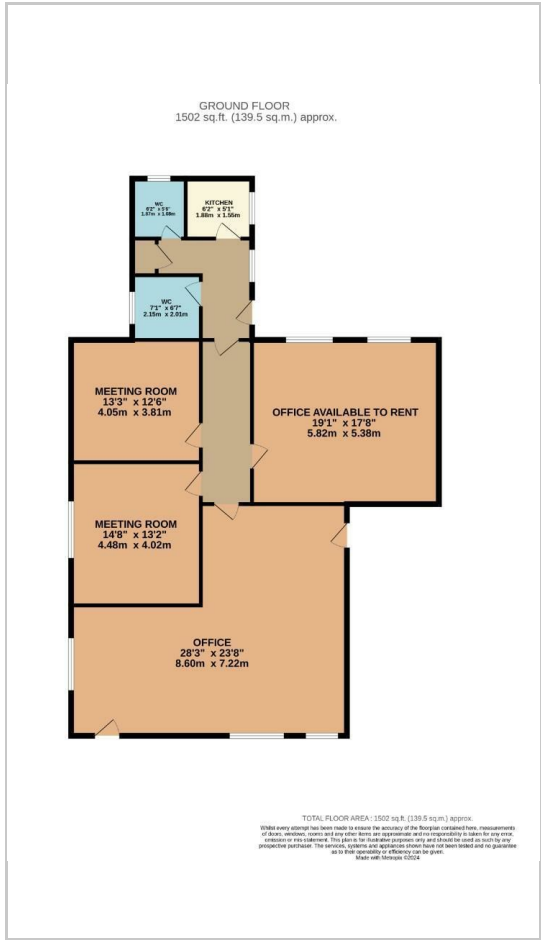
Available immediately with short/long term contracts.



Area Map



Floor Plans



Energy Efficiency Graph



These particulars, whilst believed to be accurate are set out as a general outline only for guidance and do not constitute any part of an offer or contract. Intending purchasers should not rely on them as statements of representation of fact, but must satisfy themselves by inspection or otherwise as to their accuracy. No person in this firm's employment has the authority to make or give any representation or warranty in respect of the property.