

# clever



## 48 Wesley Avenue

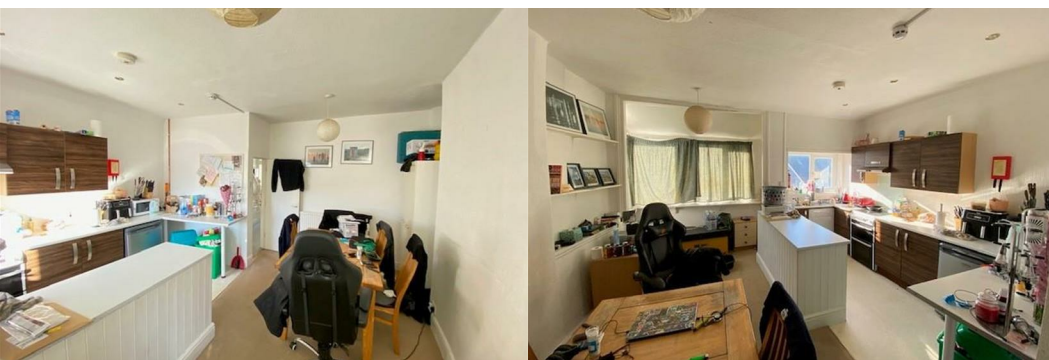
, Plymouth, PL3 4RA

**Offers in excess of £270,000**



SUPERB PERIOD HOME OFFERING EXCELLENT POTENTIAL WITH SEPARATE SELF CONTAINED ONE BEDROOM FLAT. OFF STREET PARKING AND SITUATED IN A DESIRABLE LOCATION WITHIN HYDE PARK PRIMARY CATCHMENT AREA!

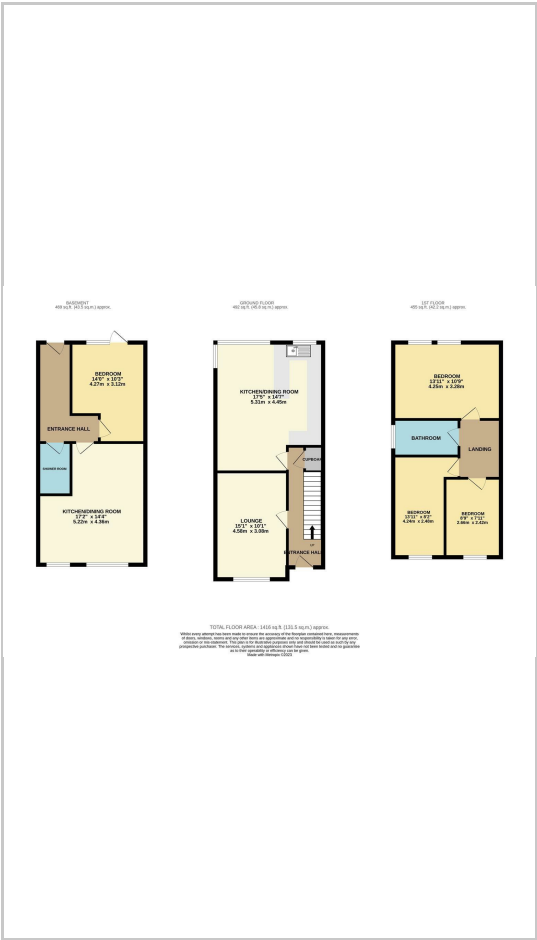
The property still requires some finishing off but offers versatility and potential "home with income". Arranged over three levels comprising on the ground floor Entrance Hall, Living Room and spacious, fitted Kitchen/Dining Room. First floor houses three generous Bedrooms and Family Bathroom. Located on the lower ground floor is a partly converted, self contained one Bedroom Flat with open plan Living/Dining/Kitchen with access to Garden, Shower Room and double Bedroom.



# Area Map



# Floor Plans



# Energy Efficiency Graph



These particulars, whilst believed to be accurate are set out as a general outline only for guidance and do not constitute any part of an offer or contract. Intending purchasers should not rely on them as statements of representation of fact, but must satisfy themselves by inspection or otherwise as to their accuracy. No person in this firm's employment has the authority to make or give any representation or warranty in respect of the property.