

clever



Flat 419 2A Old Town Street

, Plymouth, PL1 1AE

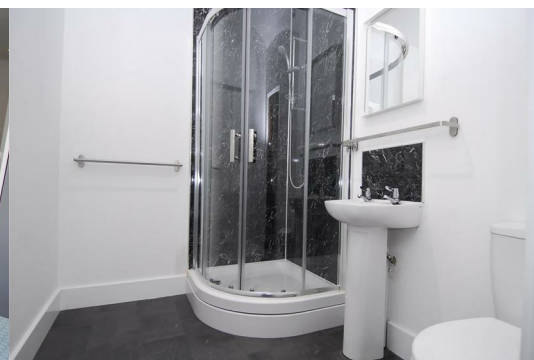
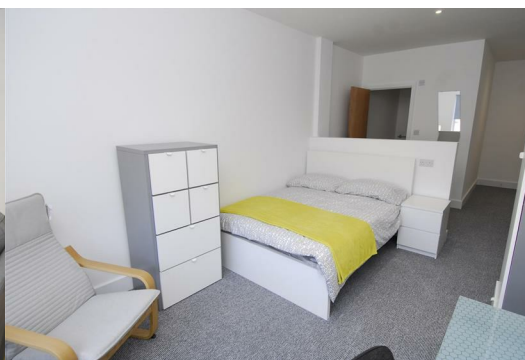
£135



** Student Property available NOW and from September 2024 **

Modern, En-suite 3 bedroom apartments located in a popular city centre location. Property in close proximity to University of Plymouth and other local amenities

Room 1 - £135pw
Room 2 - £135pw
Room 3 - £135pw
Council tax band D



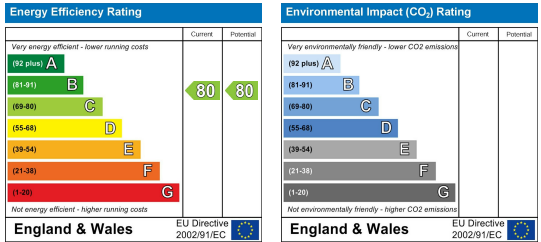
Area Map



Floor Plans



Energy Efficiency Graph



These particulars, whilst believed to be accurate are set out as a general outline only for guidance and do not constitute any part of an offer or contract. Intending purchasers should not rely on them as statements of representation of fact, but must satisfy themselves by inspection or otherwise as to their accuracy. No person in this firm's employment has the authority to make or give any representation or warranty in respect of the property.